

# AccuPlan Project Scheduling Software

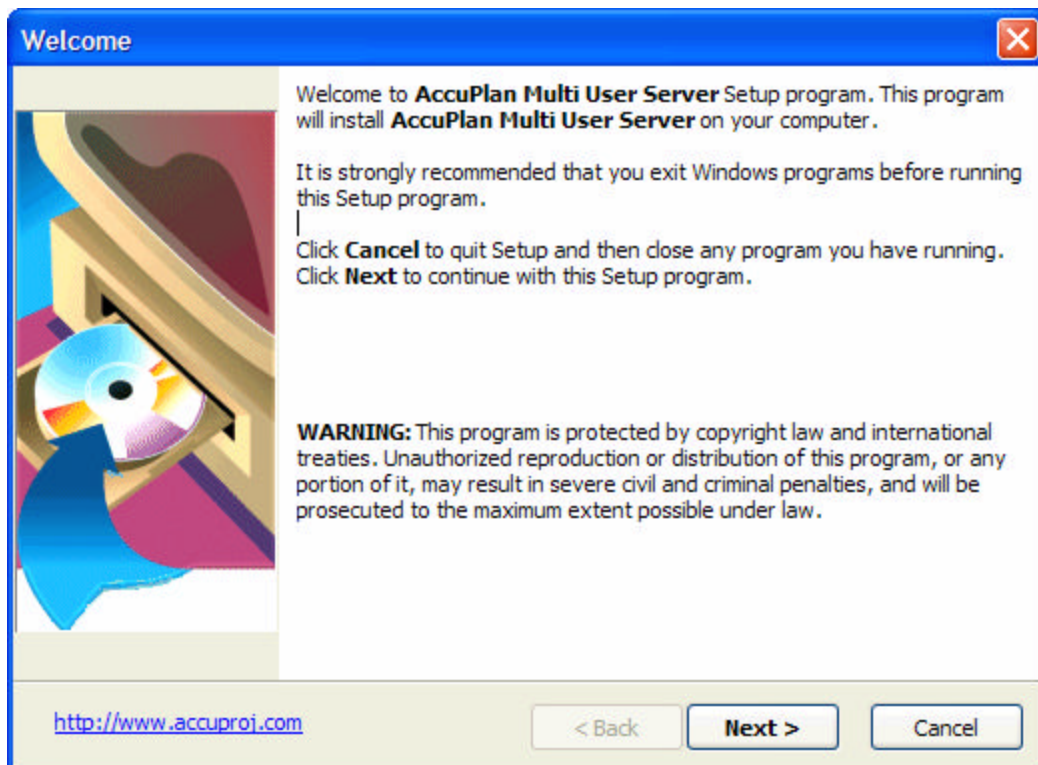
## Installation Guide

Copyright© 2004 i-ssis inc

## AccuPlan Installation Guide

Installation of a single-user system is easy and straightforward. Everything you need in order to use the system is automatically installed and configured.

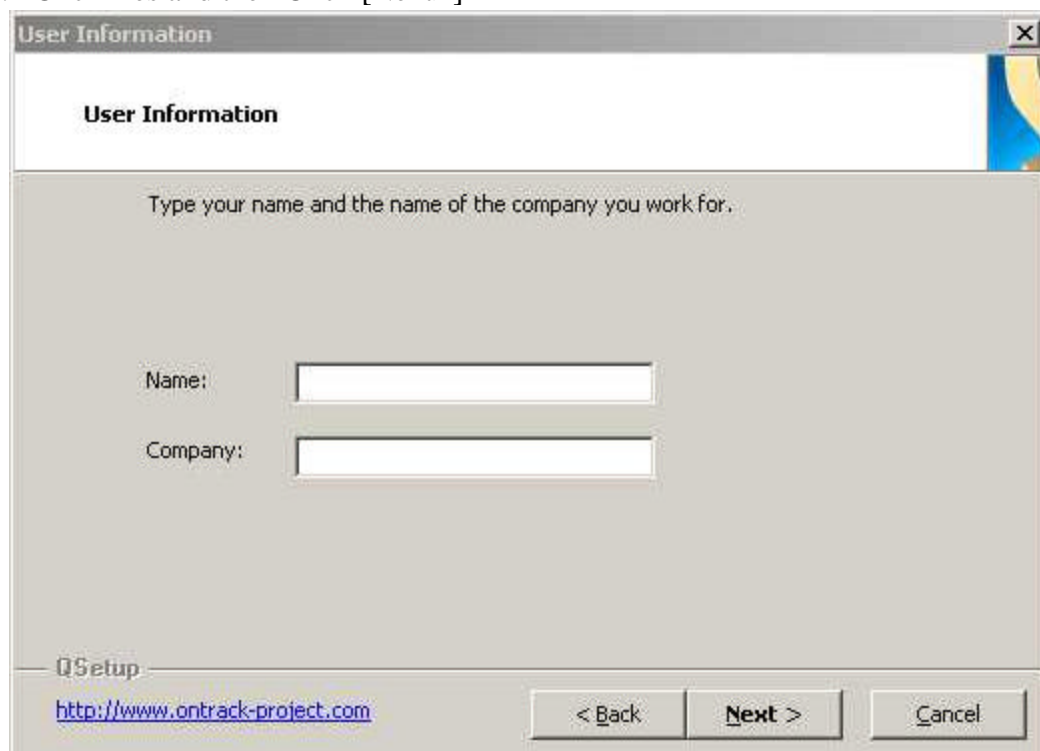
- The downloadable software is also provided in a zipped format for two reasons:
    - Some systems are not able to download executable installation programs because of security concerns.
    - Zipped files are smaller in size and quicker to download.
  - If you are installing a multi-user system, you should install the server first so that it is immediately available when the clients are installed and you can setup the client server connection right away.
  - Installation steps are generally the same for both single-user and multi-user systems. The multi-users system installation will have an additional screen to select between Client or Server installation.
  - Multi-user system will need an [additional step](#) to setup and test the connection between the [server](#) and [client](#).
1. If you are presented with an open button after downloading the software, click it to expose the installation program. Otherwise double-click the downloaded zip file.



2. Click [Next>]

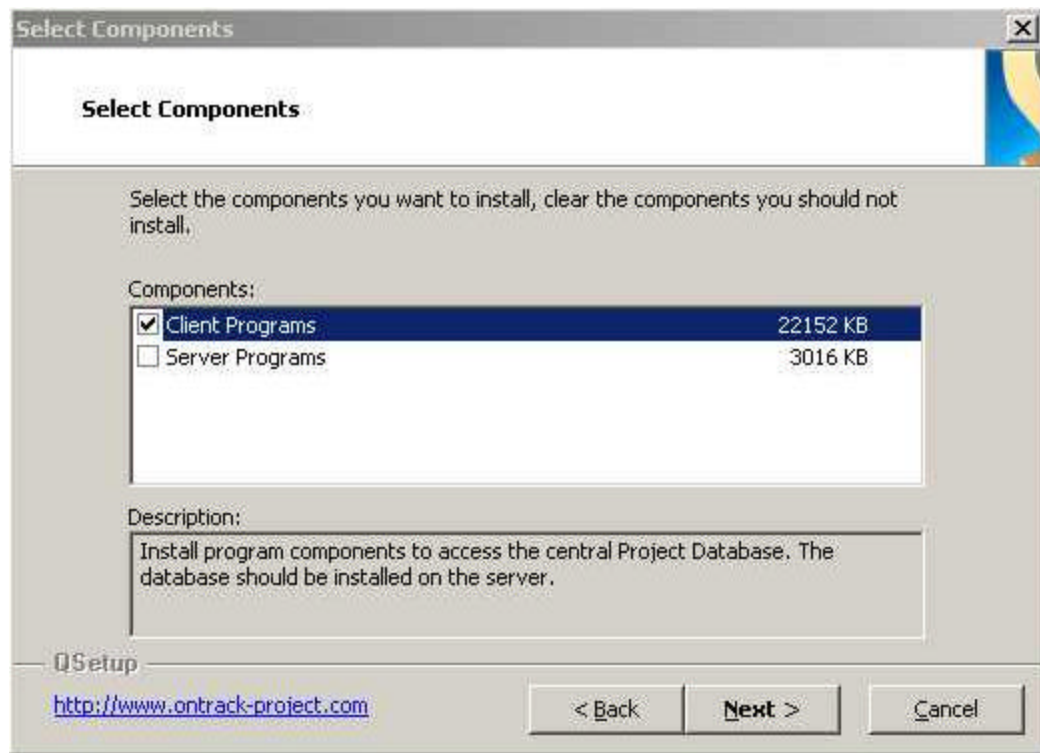


3. Click Yes and then Click [Next>]



4. Key in your User ID and the company name.

➔ If you are installing the Single-User System, skip to Step 6

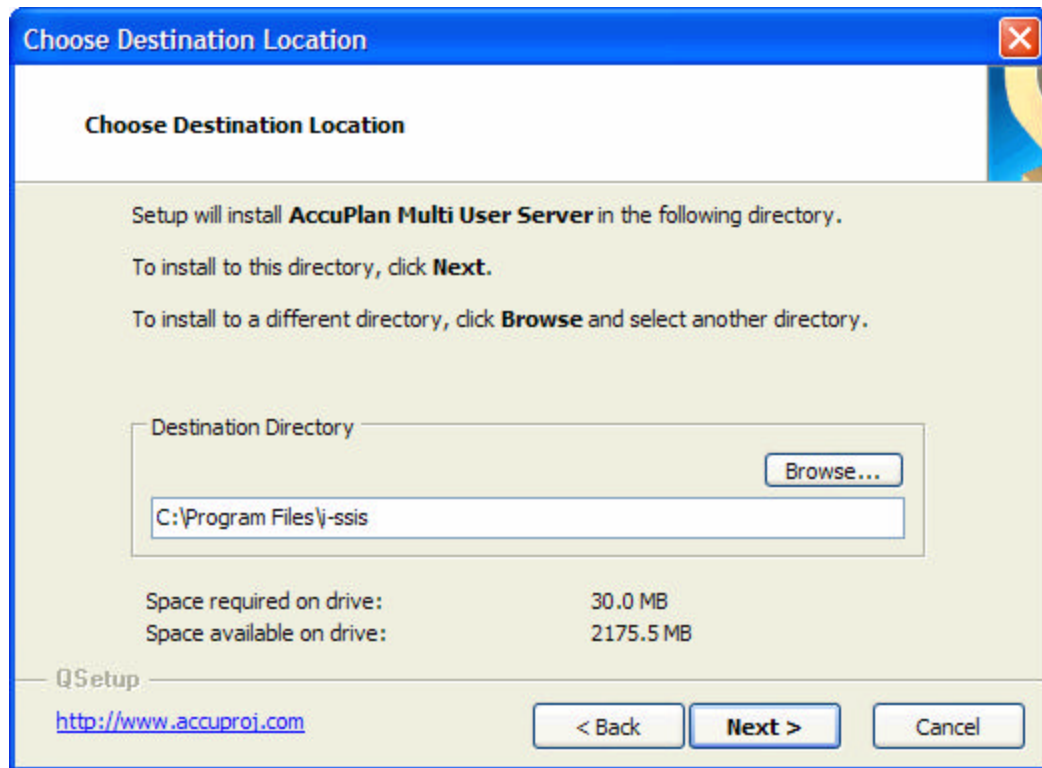


5. Depending upon the install type:

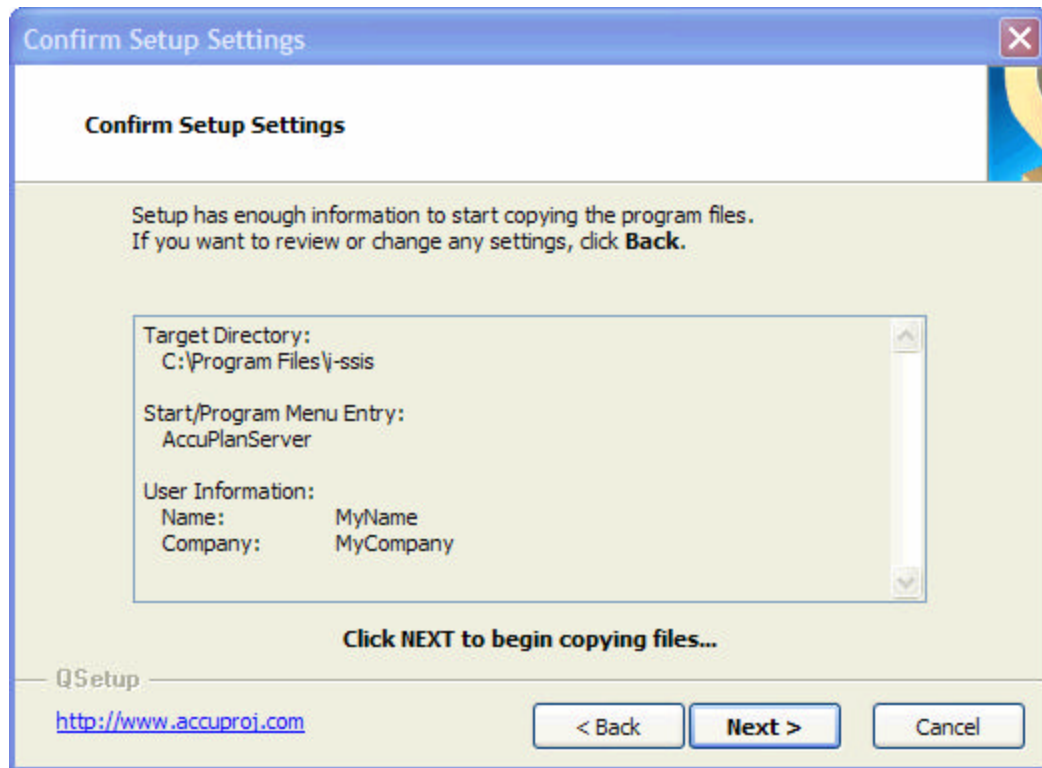
**Client Programs**: Client is the main desktop AccuPlan software.

**Server Programs**: Server is the component that is installed on the server. It contains database service Software and the database itself.

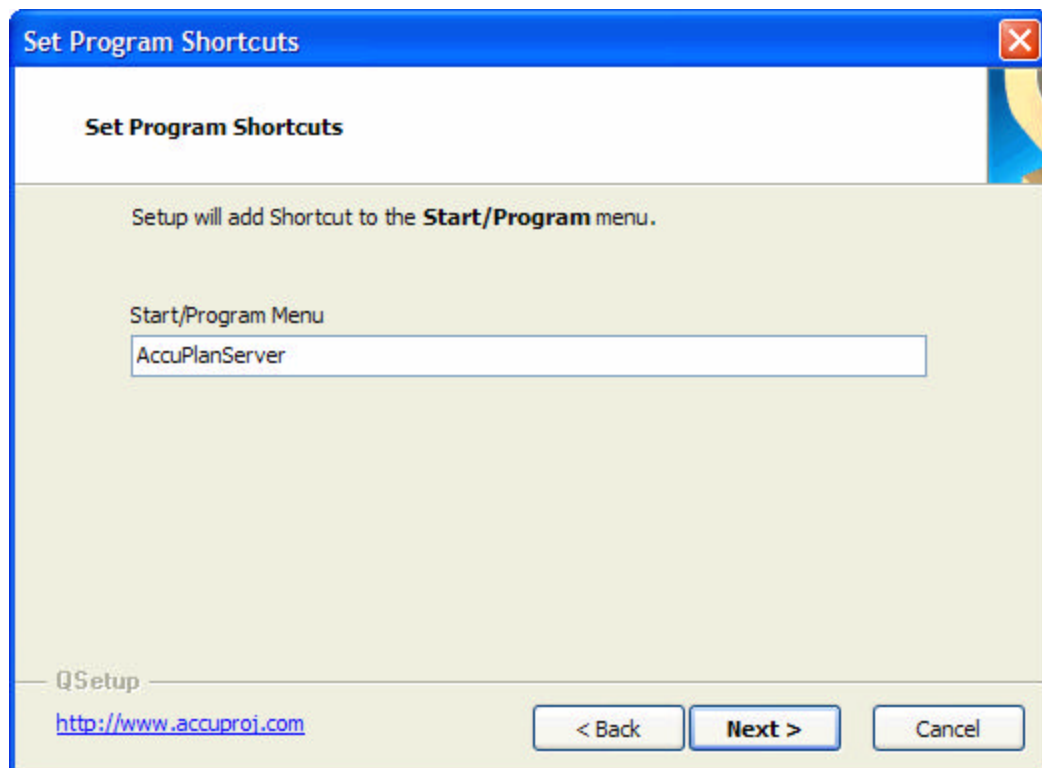
Click [Next >]



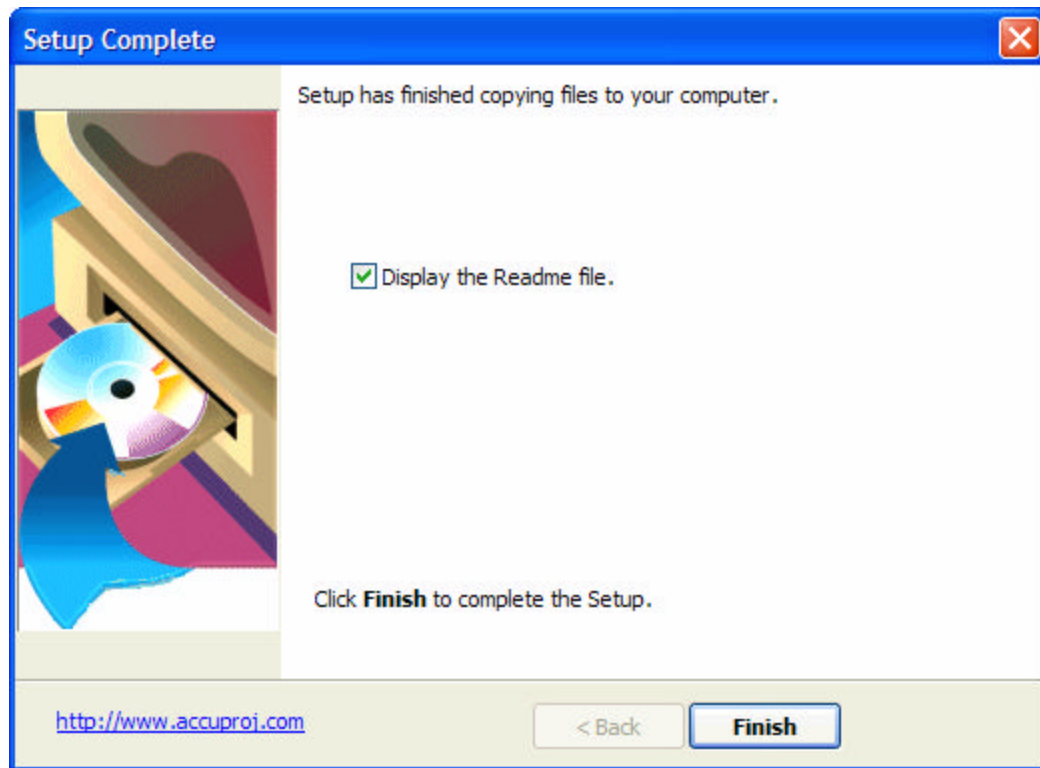
6. Click [Next >] to install at the default location  
Or,  
if you want to install the software at a different location, click [Browse] to select a different directory.



7. Click [Next >]



8. Select a name for the shortcut to be created in the program files and click Next>

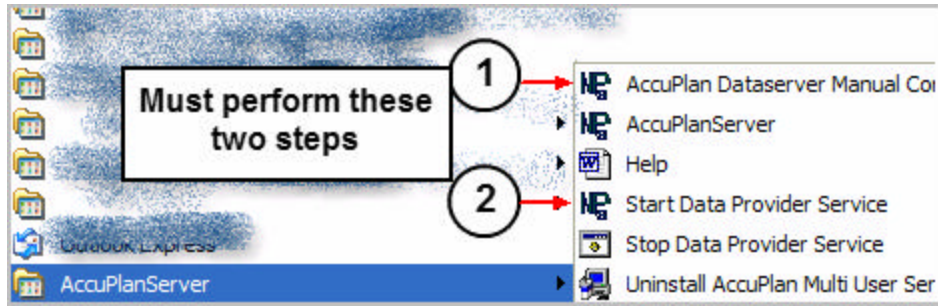


9. Click [Finish] to complete the installation process.

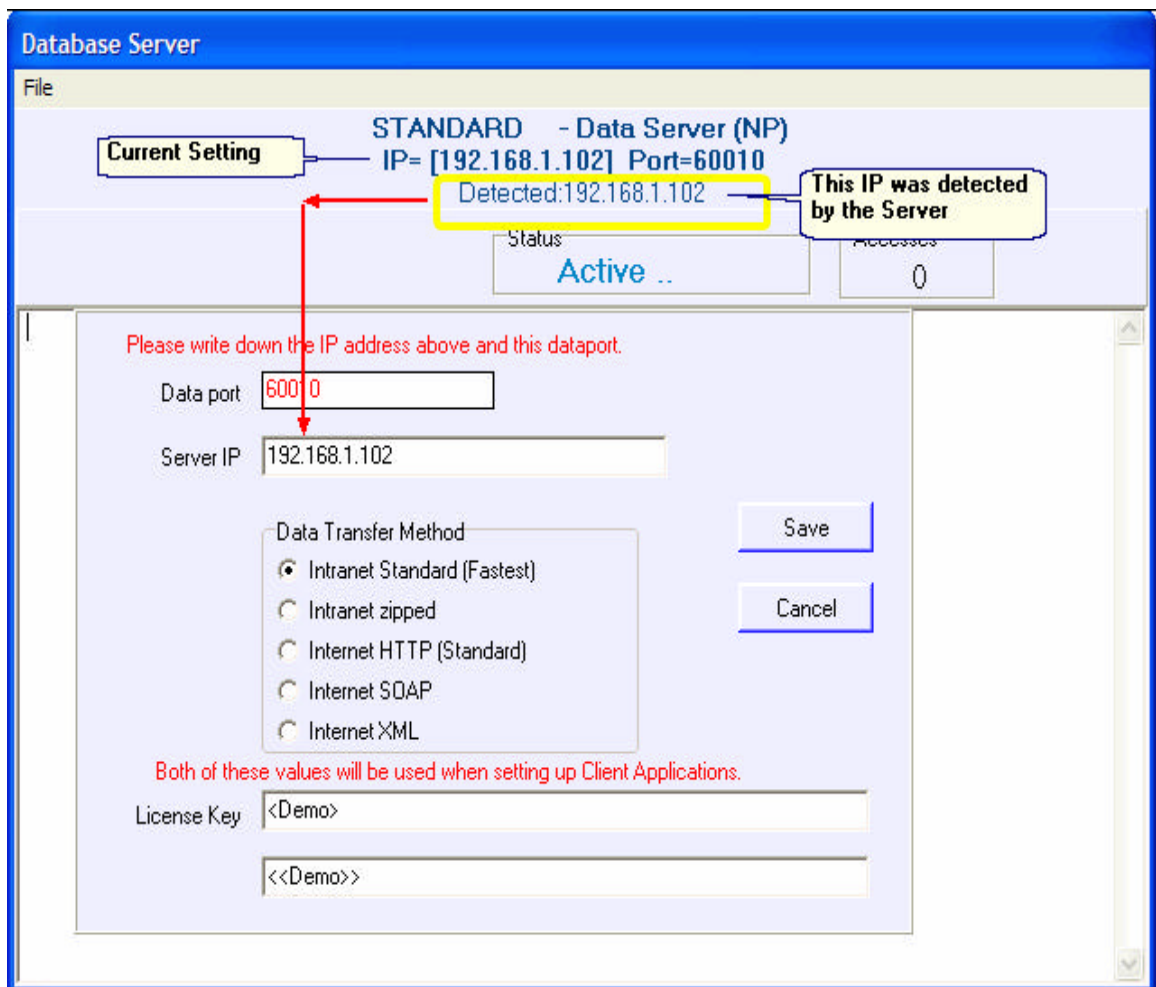
- ➔ If you installed a **single-user** system you do not have any more setup steps.
- ➔ If you are installing Server; go to Configuring Server
- ➔ If you are installing Client for the Multi User System; go to Start and Configure AccuPlan Desktop.

## Configuring Server

Server is installed as a Service Application so that it runs in the background and is available at all times.

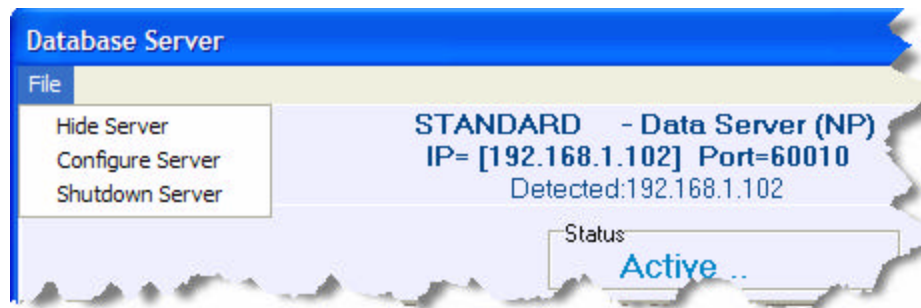


1. From “AccuPlan Server” Menu, Select “AccuPlan DataServer Manual Config.”.
2. This will display the Configure Server Screen.

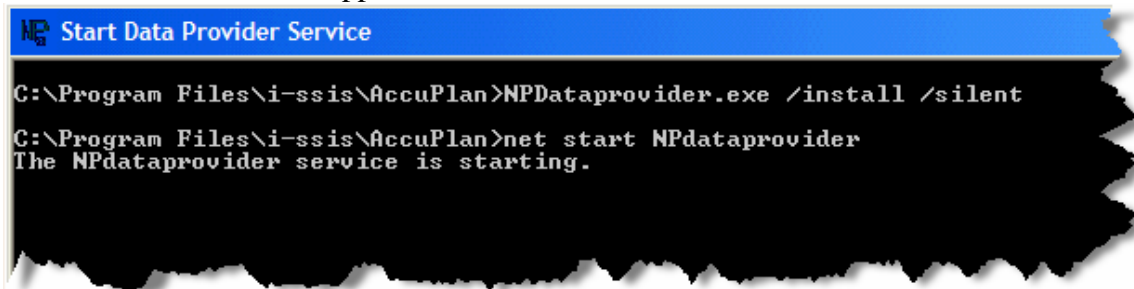




3. The server is initially configured for 60010. You can leave this setting or change it, if it conflicts with a different application.
4. Make sure that correct IP address is entered in the Server IP Box.
5. Leave the Transfer Method to IntraNet Standard. You will use other protocols if the server needs to be connected over the internet.
6. Enter the License key provided to you .
7. Click [Save].
8. ➔ Click File | Shutdown Server.
- 9.



10. ➔ Click Start Data Provider Service. This will register the application as a service and then start the application.



After the Application is registered you will see NP logo in the system tray icon at the bottom right panel.



➔ If this icon is not visible, the server did not start. Please contact the Accuplan Support for help.

## Start and Configure AccuPlan Desktop

To start the application

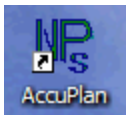
Click Start

AccuPlan Single User System

AccuPlan

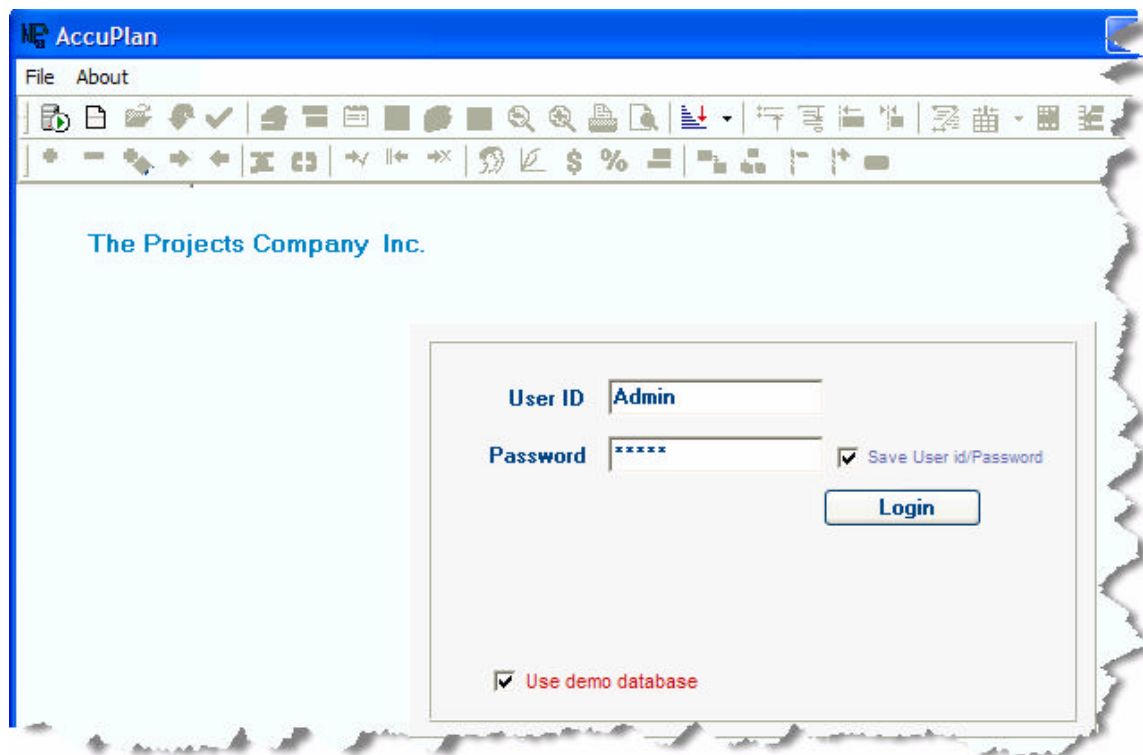
Or

Click the AccuPlan icon from the DeskTop.



The Log-In screen will be displayed.

➔ Do not try to log in yet.



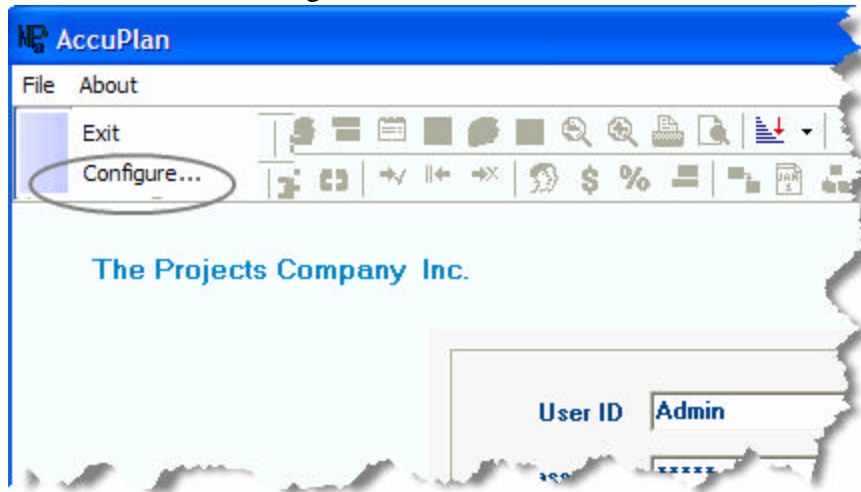
You will use the following setting initially to login:

User Id	Admin
Password	admin

## How to Configure Client Applications

When you are using the multi-user system you will install one server and multiple client desktops.

1. Click File > Configure



2. Click Configure Tab

**Configure**

Main **Configure**

Installation Type ☐ Stand Alone ☐ Local C/S ☐ Client ☐ Web

Save  
Cancel

For Client Server setup  
Please make sure that you have a valid IP address and port for the Server  
and the Server has been installed and running

URL

Use for connection over the internet.

or Server IP

Port

Use when the Data Server is installed on the LAN server.

Data Transfer Method

☒ Intranet Standard (Fastest)  
☐ Intranet zipped  
☐ Internet HTTP (Standard)  
☐ Internet SOAP  
☐ Internet XML

Current Mode

Test Connection

Connection OK

3. Installation Type: Client or Local C/S would have been checked.
4. Server IP: key the IP address of the server.
5. Database port: Port address to communicate with the server.

*This information should have been saved while configuring the server. If this information is not available then follow the steps for Server Configuration.*

6. Click [Test Connection]. This will establish a connection with the server using the keyed settings. When the connection is positively established, a “Connection OK” message will be displayed and the application will return to the login screen.

If you are not able to establish connection with the server; it is due to one of the following reasons:

- The server is not running.

- IP or port does not match the server IP and Port
- You have a firewall that is stopping the communication between the two systems. In this case you should check with the network administrator to enable this communication.

If you experience any difficulty during or after the installation, please do not hesitate to contact us. Our contact information is as follows:

<http://www.accu-plan.com>

[support@net-proj.com](mailto:support@net-proj.com)