

# How to Print on Labels.

---

©2010 Copyright by Lars Sams

Please note that Barcode Image Maker Pro includes a 750+ pages manual and that additional information can be found in the manual. You will need Adobe Reader 7 or better to be able to view the manual.

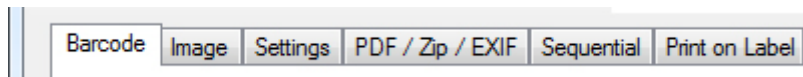
Some sample files have been included in the setup file and they are located at Documents\Barcode Image Maker Pro\

The PDF manual is at Start > All Programs > Shareware by Lars Sams > Barcode Image Maker Pro

## Let's get started.

Run Barcode Image Maker Pro

Make sure you have selected the Barcode TAB. (Please look at the Picture below)

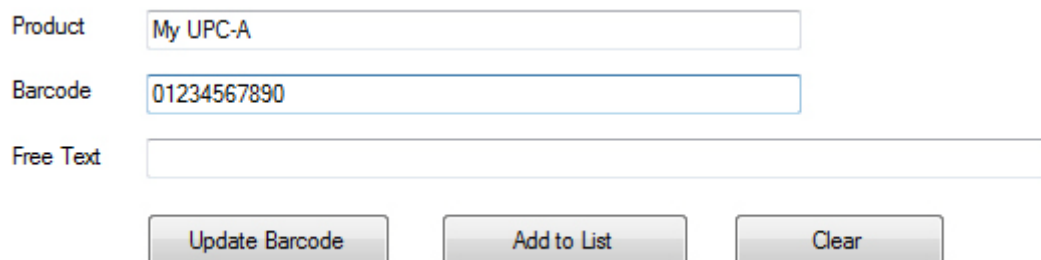


## Add a UPC-A

Select the UPC-A barcode in the Select Barcode area. (Please look at the Picture below)

A screenshot of a dropdown menu labeled 'Select Barcode'. The menu is open, showing a list of options. 'UPC-A' is the selected option, indicated by a dark background and white text. A small downward arrow is visible on the right side of the dropdown box.

Fill in the information for the barcode. The UPC-A needs 11 digits, the last digit (12<sup>th</sup> digit) is the checksum and will be added automatically. All but the Barcode is optional. (Please look at the picture below)

A screenshot of the main input area of the software. It contains three text input fields: 'Product' with the text 'My UPC-A', 'Barcode' with the text '01234567890', and 'Free Text' which is empty. Below these fields are three buttons: 'Update Barcode', 'Add to List', and 'Clear'.

The Barcode is shown in the Barcode Area. (Please look at the Picture below)



Rec.Size 100% ▾ Height: 100% ▾

Add to List

[illegible]

Now we will make an EAN-13.

Select Barcode  
EAN-13 ▼

Fill in the information for the barcode. The EAN-13 needs 12 digits, the last digit (13<sup>th</sup> digit) is the checksum and will be added automatically. All but the Barcode is optional. (Please look at the picture below)

Product	<input type="text" value="My EAN-13"/>
Barcode	<input type="text" value="491234567890"/>
Free Text	<input type="text"/>
<div><input type="button" value="Update Barcode"/> <input type="button" value="Add to List"/> <input type="button" value="Clear"/></div>	

The Barcode is shown in the Barcode Area. (Please look at the Picture below)



Barcode Image Maker Pro has predefined GS1 recommended size for the barcode and you can quickly change the size by using the Rec.Size and Height in the Tool Bar (icon bar). We use the default, Rec.Size 100% and Height 100%. (Please look at the Picture below)

Rec.Size 100% ▾ Height: 100% ▾

Click on the Add to List button. (Please look at the Picture below)

Add to List

The EAN-13 barcode have been added to the Barcode List (Please look at the Picture below)

[illegible]

## Select the barcodes and Label

Now we will select both the UPC-A and the EAN-13, right click in the Barcode List and click on Check all Items. (Please look at the Picture below)

Product	Barcode	Digit Sup.	Free Text	Type
<input checked="" type="checkbox"/> My UPC-A	01234567890			UPA0
<input checked="" type="checkbox"/> My EAN-13	491234567890			E130

- Check all Items
- Uncheck all Items
- Delete All checked Items
- Check barcode Item ▶
- Delete Item

Click on the Print on Label TAB. (Please look at the Picture below)

Barcode Image Settings PDF / Zip / EXIF Sequential Print on Label

Select the label you would like to use. I will use the Avery C2160, it's in the A4 size (millimeters). You will be able to use Letter size (in inches) as well. (Please look at the Picture below)

Select Label

Avery C2160 (mm) ▼

You will also be able to align the barcode on the label, by default its Left and Top, but in this case we set it to Center and Center. (Please look at the Picture below)

Barcode Alignment on Label

Horizontal

☐ Left

☒ Center

☐ Right

Vertical

☐ Top

☒ Center

☐ Bottom

## Lets print the barcodes on labels

We are not going to make any changes to the label, but I will fill in 5 in the Labels to Print of each item and also I have checked the Outline Labels and Check to see if Barcode fits label. (Please look at the Picture below)

Label Measurements

Label Width: 63,5 mm

Label Height: 38,1 mm

Horizontal Pitch: 66 mm

Vertical Pitch: 38,1 mm

Adjust Barcode Placement

Left/Right: 0 mm

Up/Down: 0 mm

Preview / Print

☒ Labels to Print of each item: 5

☐ Page(s) to print of each item: 2

☒ Outline Labels

☒ Check to see if Barcode fits label.

Preview Print

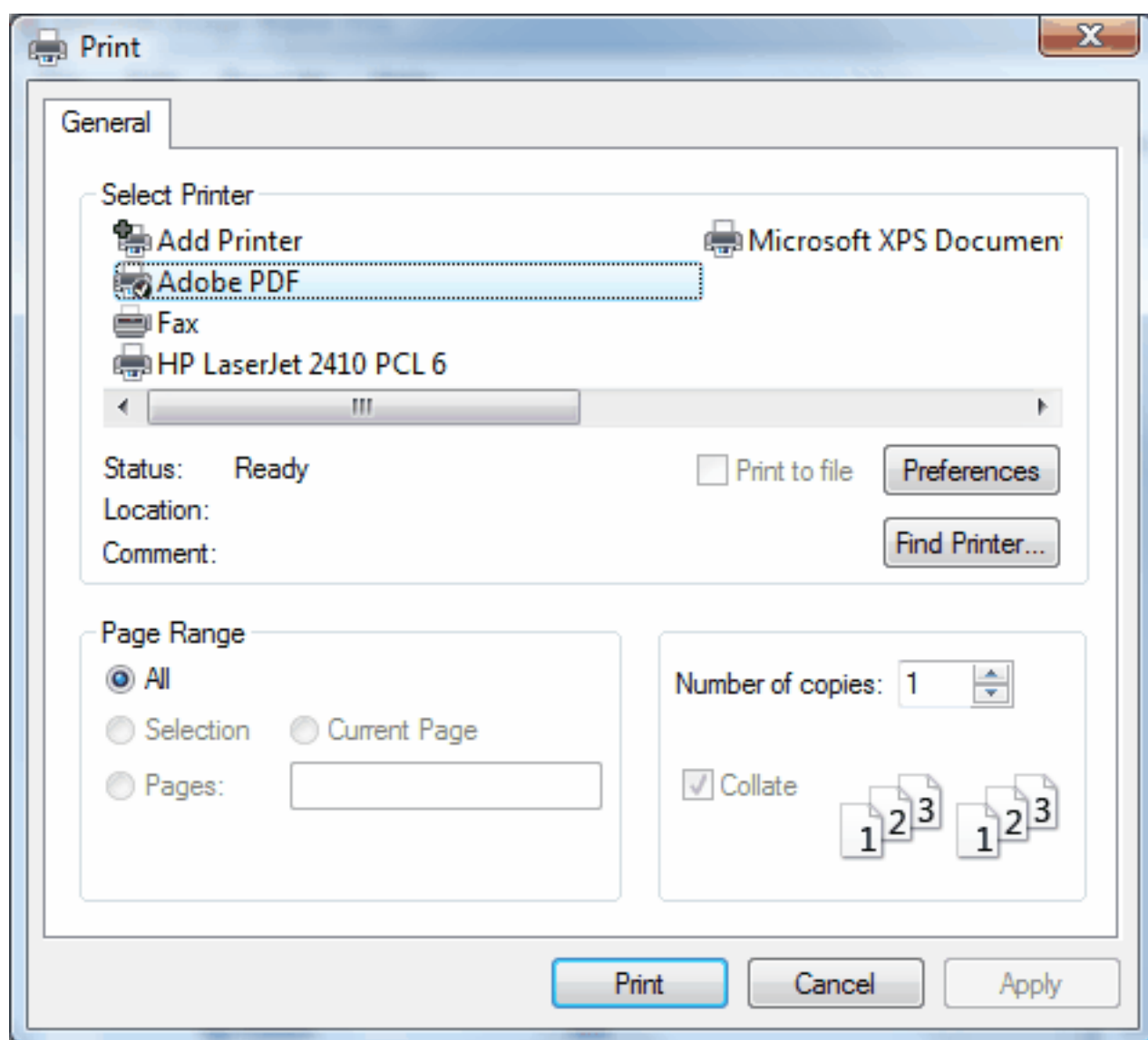


Use the Preview icon in the tool bar or click on the Review button to preview the barcodes on the labels.

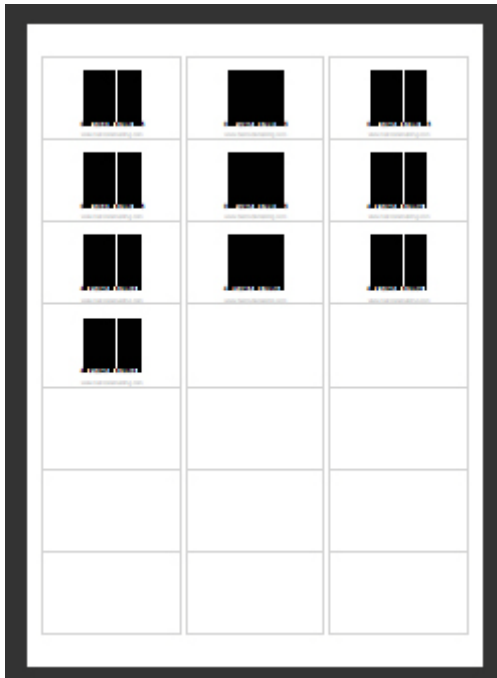


Use the Print icon in the tool bar or click on the Print button. I will click on the Print icon

The Print dialog window will show. Select the printer you would like to use by clicking on it, when ready click on the Print button. In this case I use Adobe PDF. (Please look at the Picture below)



This is how the label sheet looks at 25% magnification in Adobe. (Please look at the Picture below)



This is how one label looks. (Please look at the Picture below)



## Contact

Now you know how to print barcodes on labels. If you have any questions, please e-mail [info@barcodemaking.com](mailto:info@barcodemaking.com)

The homepage is at [www.barcodemaking.com](http://www.barcodemaking.com)

## Get Barcode Image Maker Pro.

Barcode Image Maker Pro is only USD \$68 (as low as USD \$53, depending on the number of copies ordered.)



Barcode Image Maker Pro., **Product ID: 300314279** (Product ID: is valid for ShareIt! only).

Order Page:

<https://secure.shareit.com/shareit/checkout.html?productid=300314279&language=English>



Barcode Maker., **Product ID: 32763-11** (Product ID: is valid for regNow only)

Order Page: [http://www.regnow.com/softsell/nph-softsell.cgi?ss\\_short\\_order=true&items=32763-11](http://www.regnow.com/softsell/nph-softsell.cgi?ss_short_order=true&items=32763-11)