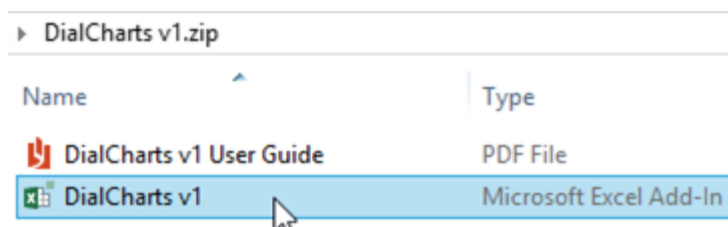


DialCharts is for Microsoft® Excel® all versions 2007 – 2013 on Windows®

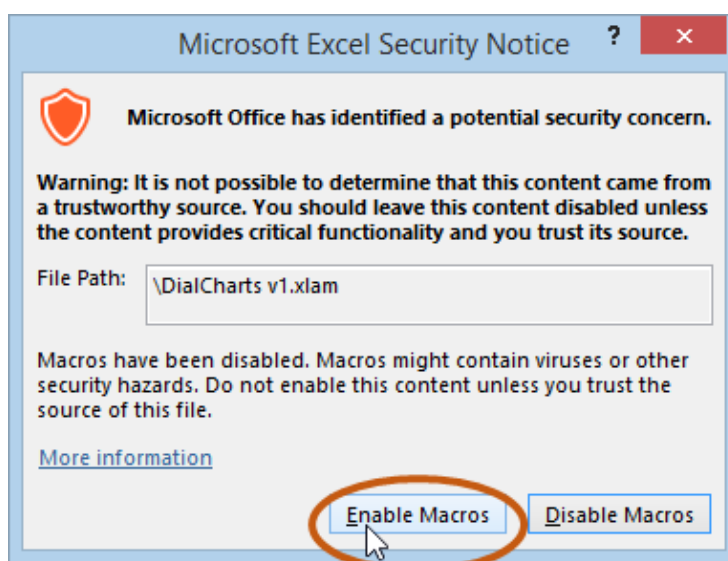
## It's quick and easy to setup DialCharts!

From the zip folder you downloaded, open the DialCharts Excel file:



When prompted, click 'Enable Macros', or the equivalent in your version of Excel:

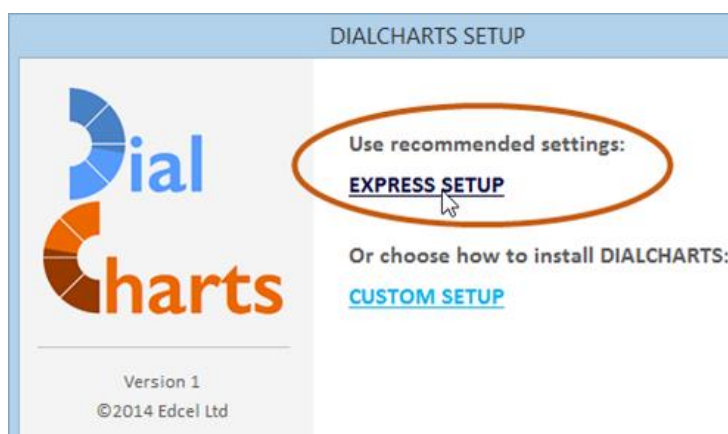
(If you didn't see a prompt like this, see 'Enabling Macros', on the second page.)



Follow the DialCharts setup and you're done!

'EXPRESS SETUP' installs DialCharts in just two clicks:

(It's easy to uninstall DialCharts if you change your mind.)

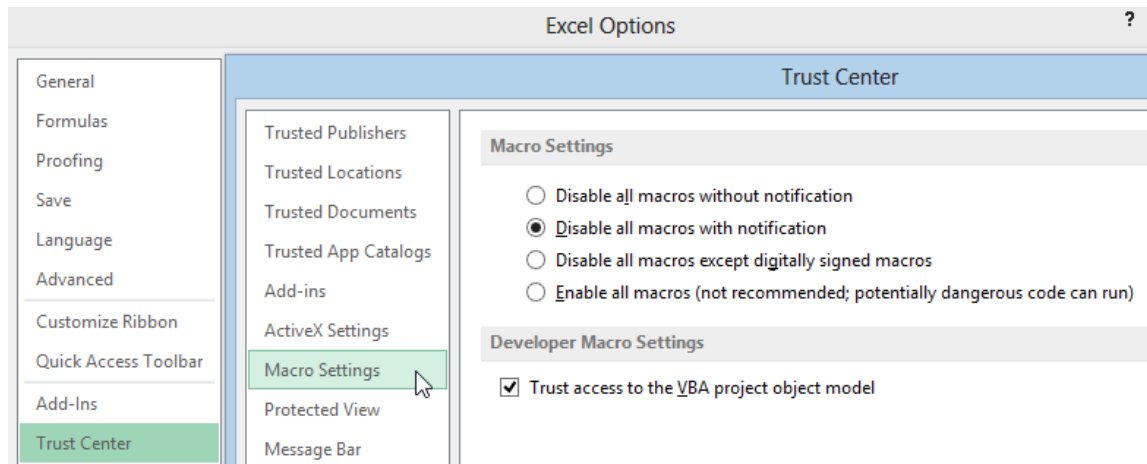


Note: if you've been using a trial version of DialCharts, your new version will import all your dials and settings when you install it, so you're ready to go!

# Enabling Macros

If you didn't see an 'Enable Macros' prompt when you opened DialCharts, you probably need to change your Excel Macro Security Settings.

Open Excel Options → 'Trust Center' → 'Trust Center Settings' → 'Macro Settings':



If your Macro Settings were set to 'Disable all Macros without notification', choose another option (e.g. the second option, 'Disable all macros with notification') and confirm your choice.

If not, you should also check under 'Add-ins' (also under 'Trust Center Settings') that Excel is not set to block all add-ins from running. If it is, change and confirm these settings.

When you've changed the relevant settings, close Excel completely, then re-open DialCharts.