

DMXconverter

Version 1.1 1 October 2006

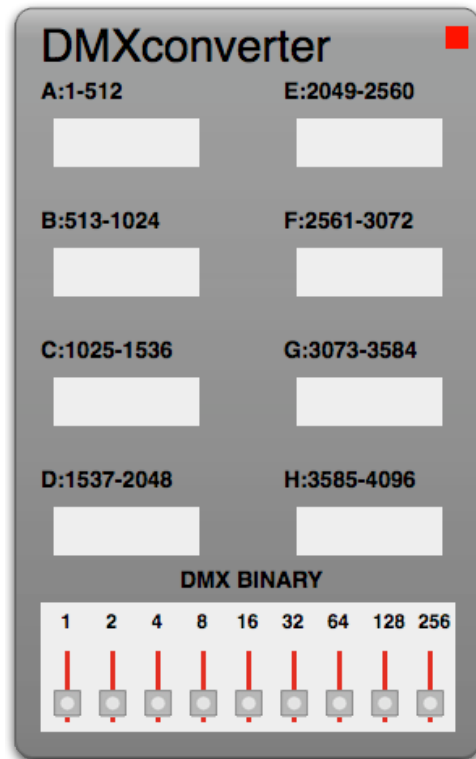
Summary

DMXconverter is a special purpose calculator widget for use with DMX512 installations. It converts between full channel numbers and the corresponding DMX channel numbers.

Description

The DMXconverter widget provides a simple means of converting between between full channel numbers and the corresponding DMX channel numbers.

The widget provides eight text input boxes, one for each port or universe.

The image shows a software widget titled "DMXconverter" with a red square icon in the top right corner. It features eight text input boxes arranged in a 4x2 grid. Each box is labeled with a port letter and a range of channel numbers: A:1-512, B:513-1024, C:1025-1536, D:1537-2048, E:2049-2560, F:2561-3072, G:3073-3584, and H:3585-4096. Below the input boxes is a section labeled "DMX BINARY" containing eight toggle switches. Above each switch is a numerical value representing a power of two: 1, 2, 4, 8, 16, 32, 64, 128, and 256. The switches are currently in the "off" position.

Each text input box has a particular range of valid channel numbers.

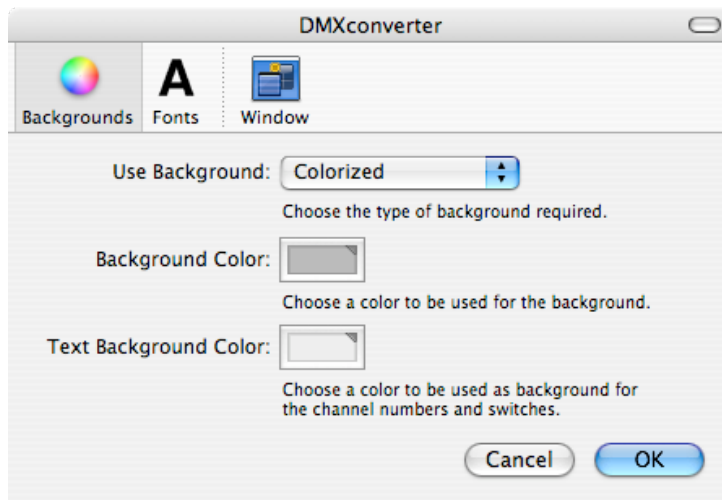
PORT	CHANNELS
A	1-512
B	513-1024
C	1025-1536
D	1537-2048
E	2049-2560
F	2561-3072
G	3073-3584
H	3585-4096

When a valid channel number is entered, the widget displays eight channel numbers which use the same 9-bit DMX channel setting.

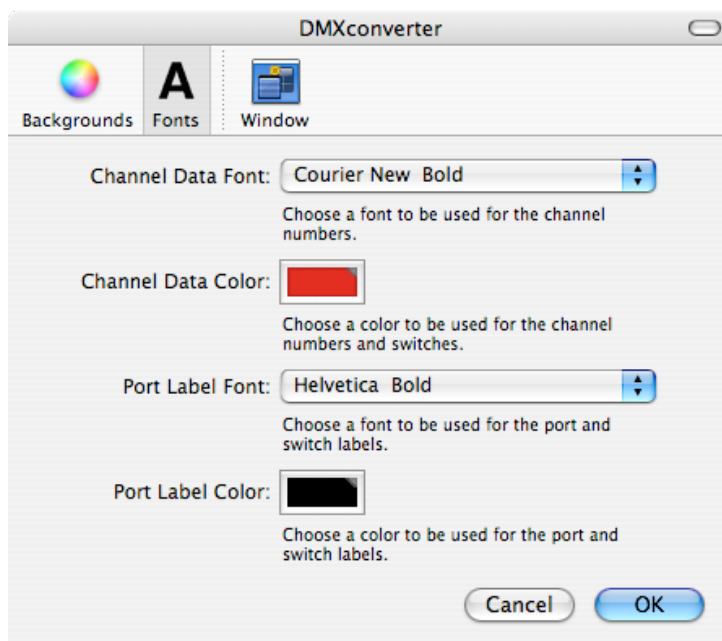
The DMX channel setting is also displayed in binary on the switch panel.

The switches may also be toggled to set a 9-bit value, in which case the eight corresponding channel number are displayed.

Preferences



There are preferences to set the type of background and the background color of the widget. The background color of the channel number input boxes and the switch panel can also be set.



There are also preferences to set the fonts and colors of the channel number input boxes and the box labels.

Credits

The widget uses a modified version of the GlassWindow class created by Michael Bleigh <mbleigh@cc.gatech.edu>.

The License window was designed by Ricky Romero.

Widget Concept by Joshua Thatcher <jdtinc@earthlink.net>.

Widget Design and Coding

This program and associated documentation is Copyright 2004-2006 Harry Whitfield.
mailto:g6auc@arrl.net

License

DMXconverter - A channel converter for DMX512.
Copyright © 2004-2006 Harry Whitfield

This program is free software; you can redistribute it and/or modify it under the terms of the GNU General Public License as published by the Free Software Foundation; either version 2 of the License, or (at your option) any later version.

This program is distributed in the hope that it will be useful, but WITHOUT ANY WARRANTY; without even the implied warranty of MERCHANTABILITY or FITNESS FOR A PARTICULAR PURPOSE. See the GNU General Public License for more details.

You should have received a copy of the GNU General Public License along with this program; if not, write to the Free Software Foundation, Inc., 51 Franklin St, Fifth Floor, Boston, MA 02110-1301 USA.