

# MondoMail

**FileMaker Plug-In For Windows and Macintosh**



## USER'S GUIDE

©1999-2001 Acme Technologies. All Rights Reserved

Acme Technologies  
55 Danbury Road  
Ridgefield, CT 06877  
USA

Acme Technologies, MondoMail and JavaCompanion are trademarks of Acme Technologies. All other trademarks are the property of their respective owners.

All persons and companies listed in the examples here are purely fictitious, and any resemblance to existing companies and persons is purely coincidental.

Mention of non-Acme Technologies products is for informational purposes only and constitutes neither an endorsement nor a recommendation.



---

## *Limited Warranty & Disclaimer*

---

**Limited Warranty.** Acme Technologies warrants that for sixty (60) days from the date of original purchase the media (for example, the diskettes) on which the Software is contained will be free from defects in materials and workmanship.

**Customer Remedies.** Acme Technologies' and its suppliers' entire liability, and your exclusive remedy, shall be, at Acme Technologies' option, either (i) to return the purchase price paid for the license, if any, or (ii) to replace the defective media on which the Software is contained with a copy on nondefective media. You must return the defective media to Acme Technologies at your expense with a copy of your receipt. This limited warranty is void if the defect has resulted from accident, abuse, or misapplication. Any replacement media will be warranted for the remainder of the original warranty period. Outside the United States, this remedy is not available to the extent that Acme Technologies is subject to restrictions under United States export control laws and regulations.

**Warranty Disclaimer.** To the maximum extent permitted by applicable law, and except for the limited warranty set forth herein, THE SOFTWARE IS PROVIDED ON AN "AS IS" BASIS WITHOUT WARRANTY OF ANY KIND, EXPRESS OR IMPLIED. WITHOUT LIMITING THE FOREGOING PROVISIONS, YOU

---

ASSUME RESPONSIBILITY FOR SELECTING THE SOFTWARE TO ACHIEVE YOUR INTENDED RESULTS, AND FOR THE INSTALLATION OF, USE OF, AND RESULTS OBTAINED FROM THE SOFTWARE. WITHOUT LIMITING THE FOREGOING PROVISIONS, ACME TECHNOLOGIES MAKES NO WARRANTY THAT THE SOFTWARE WILL BE ERROR-FREE OR FREE FROM INTERRUPTIONS OR OTHER FAILURES, OR THAT THE SOFTWARE WILL MEET YOUR REQUIREMENTS. TO THE MAXIMUM EXTENT PERMITTED BY APPLICABLE LAW, ACME TECHNOLOGIES DISCLAIMS ALL WARRANTIES, EITHER EXPRESS OR IMPLIED, INCLUDING BUT NOT LIMITED TO IMPLIED WARRANTIES OF MERCHANTABILITY, FITNESS FOR A PARTICULAR PURPOSE, AND NON-INFRINGEMENT WITH RESPECT TO THE SOFTWARE AND THE ACCOMPANYING DOCUMENTATION. SOME STATES AND JURISDICTIONS DO NOT ALLOW LIMITATIONS ON IMPLIED WARRANTIES, SO THE ABOVE LIMITATION MAY NOT APPLY TO YOU. The foregoing provisions shall be enforceable to the maximum extent permitted by applicable law.

---

<i>Limited Warranty &amp; Disclaimer</i>	<b><i>III</i></b>
--	-------------------

<i>Preface: Getting Help</i>	<b><i>IX</i></b>
------------------------------	------------------

Net Tools Discussion List	<b>X</b>
Using MondoMail Documentation	<b>X</b>

<i>Chapter 1: MondoMail Software License</i>	<b><i>1</i></b>
--	-----------------

What Is A Software License?	<b>2</b>
Your Software License	<b>2</b>
<i>Entering Activation Key</i>	<b>3</b>
Software License Agreement	<b>4</b>

<i>Chapter 2: General Functions</i>	<b><i>5</i></b>
-------------------------------------	-----------------

<i>Plug-In Results</i>	<b>6</b>
SMTP-Activate	<b>6</b>
SMTP-ShortVersion	<b>6</b>
SMTP-LongVersion	<b>6</b>
MAIL-Activate	<b>7</b>
MAIL-ShortVersion	<b>7</b>
MAIL-LongVersion	<b>7</b>

<i>Chapter 3: SMTP Functions</i>	<b><i>9</i></b>
----------------------------------	-----------------

SMTP-NewMessage	<b>9</b>
SMTP-SendMessage	<b>9</b>
SMTP-SetSubject	<b>10</b>
SMTP-SetFrom	<b>10</b>

---

SMTP-SetReplyTo	11
SMTP-AddToRecipient	11
SMTP-AddCCRecipient	11
SMTP-AddBCCRecipient	12
SMTP-SetContent	12
SMTP-SetURLContent	13
SMTP-AddHeader	13
SMTP-RequestReturnReceipt	14
SMTP-BeginMultipart	14
SMTP-AddBodyPart	14
SMTP-AddURLBodyPart	15
SMTP-AddAttachment	15
SMTP-EndMultipart	16
SMTP-SendSimpleEmail	16
 <i>Chapter 4: POP3/IMAP Functions</i>	 <i>17</i>
MAIL-Connect	17
MAIL-URLConnect	17
MAIL-Disconnect	18
MAIL-IsConnected	18
MAIL-CountMessages	19
MAIL-GotoMessage	19
MAIL-FetchEnvelopes	19
MAIL-GetMessageSize	19
MAIL-GetRecipients	20
MAIL-GetMessageUID	20
MAIL-GetSubject	20
MAIL-GetBody	21

---

MAIL-GetHeader	21
MAIL-Date	21
MAIL-Sender	21
MAIL-GetContentType	22
MAIL-MarkMessageDeleted	22
MAIL-SetMessageFlag	22
MAIL-GetMessageFlags	23
MAIL-CountAttachments	23
MAIL-SaveAttachment	23
MAIL-SaveEmailMessage	24
MAIL-DumpMessageStructure	24
MAIL-GetRawMessage	24
 <i>Chapter 5: Other Functions</i>	 25
SMTP-SetDelimiter	25
SMTP-DetachLogFile	25
JAVB-ChooseFile	26

---



---

# *Preface: Getting Help*

---

Welcome to MondoMail from Acme Technologies. MondoMail is a FileMaker Pro plug-in designed to give you the ability to send and receive email from within FileMaker Pro databases.

MondoMail utilizes an advanced Java plug-in architecture for FileMaker Pro called JavaCompanion. JavaCompanion allows plug-ins to be written for FileMaker that are able to utilize the advantages of Java. JavaCompanion based plug-ins run on any platform that FileMaker supports (currently Windows, Macintosh and Mac OS X) through a single plug-in.

FileMaker Pro plug-in developers interested in learning more about the benefits of write-once, run-everywhere Java plug-in development for FileMaker Pro should contact Acme Technologies support for licensing information. Plug-ins based on the JavaCompanion architecture can be rapidly developed, are amazingly fast and inherit the abilities of Java itself (such as multi-threading).

If you are new to FileMaker Pro, it is advised that you learn the basics of FileMaker Pro. This document is geared towards FileMaker developers that are familiar with utilizing FileMaker plug-ins.

---

## ***Net Tools Discussion List***

There is an email discussion list specifically for MondoMail and JavaCompanion. This is the single best resource for anything related to NetTools.

You can subscribe, unsubscribe and search the archives at the following URL:

<http://www.digitalpoint.com.com/lists/javacompanion.html>

---

## ***Using MondoMail Documentation***

This user manual provides documentation for programming with MondoMail functions. The manual is best used for reference and background information, while the FileMaker database "MondoMail.fp5" helps you get started using MondoMail immediately. Click on the "How's it work?" button to see the FileMaker Pro functions used (including sample data) for each of the operations demonstrated in the database. Our unique code-generation system helps shorten the time required to begin adding MondoMail functionality to your databases.

Start by reading *Chapter 1: MondoMail Software License*, for information regarding your rights as a licensee of the software.

---

# *Chapter 1: MondoMail Software License*

---

MondoMail is licensed on a per workstation basis. What this means is the license fees are based on the number of employee workstations that you wish to utilize MondoMail from. Multi-workstation and developer licenses are also available, please contact Acme Technologies for details.

**The MondoMail software license is non-transferable.**

Payment of your license fee grants you the following:

- Right to use MondoMail on the licensed workstations
- Technical support via email
- All minor revisions of MondoMail at no additional charge
- Use of MondoMail for a single company

Your license does NOT grant you following:

- The ability to view or modify the source-code

For an additional fees you can purchase additional products or services, such as priority tech support.

---

### ***What Is A Software License?***

The MondoMail software license is a license to use the plug-in on a set number of computers. You are paying for the right to use the software on those workstations.

---

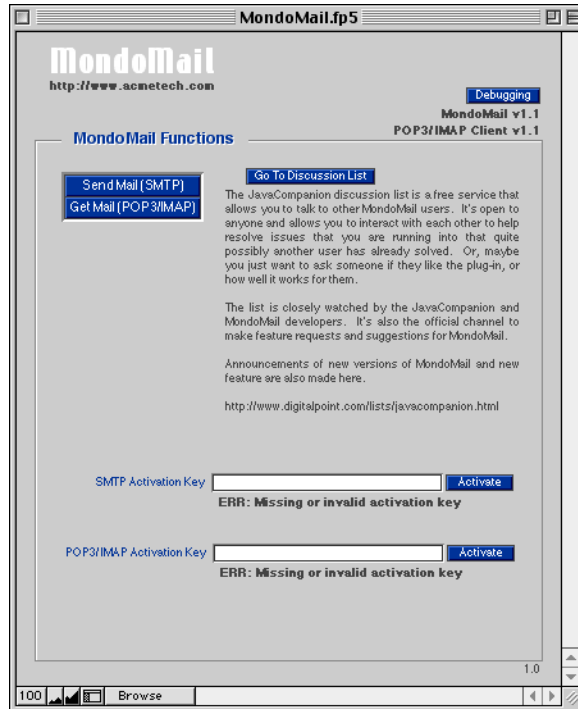
### ***Your Software License***

The licensing is the sole responsibility of the user to keep up to date. Acme Technologies is not responsible for any loss of business due to re-licensing the software. You must allow Acme Technologies five (5) working days to ship a new key code to extend your license.

The licensing fee is subject to change annually. Once payment has been received for a license extension, Acme Technologies will ship you a new key code via email, which will allow your workstation license to be extended.

## Entering Activation Key

Your activation key will allow MondoMail to be used on the workstations that it was licensed for. You can enter the activation key under the Activate Licence section under the Prefs button within the demo database or you can activate it within your own database (the syntax to do so is addressed in a later chapter).



---

### ***Software License Agreement***

By opening this package and using this software, you are bound by the terms and agreements of the software license agreement that is included with this software. If for any reason you are not satisfied, you may return the product, with a disk package that **is factory sealed**, to the original vendor that you purchased the software from. (Subject to the return policy of the vendor. Please confirm their return policy with them.)

---

## Chapter 2: General Functions

---

MondoMail has been developed to work with the JavaCompanion plug-in architecture from Acme Technologies. This technology greatly simplifies the development of cross-platform FileMaker Pro plug-ins, however, due to limitations in the current FileMaker plug-in programming interface, JavaCompanion plug-ins do not display their function names within FileMaker's calculation dialog as other plug-ins do. Instead, all plug-ins based on JavaCompanion are accessed through a single External plug-in function name (JAVB-Command), and the actual plug-in's function name is provided as the first parameter to this function call. For example:

```
External("JAVB-Command", "SMTP-NewMessage" & "!" & ... )
```

Examples for plug-in functions can be found in the MondoMail.fp5 database that comes with this document. The “How Does It Work?” section in the database will show you examples of all functions as well as populate the code with your data (or sample data).

How Does It Work?

---

## **Plug-In Results**

Functions that you call with MondoMail will return results of “**ERR:**” followed by whatever the error was if there is any problem with it.

---

### ***SMTP-Activate***

This function is used to activate your license key you receive when you receive when you purchase MondoMail.

```
External("JAVB-Command", "SMTP-Activate" & "|" & [Activation Key])
```

This call will return a text string that gives you info. Either the plug-in was activated, or there was some sort of error.

---

### ***SMTP-ShortVersion***

This function is used to get a numeric value of the plug-in version.

```
External("JAVB-Command", "SMTP-ShortVersion")
```

---

### ***SMTP-LongVersion***

Using this function, you can retrieve a string that contains the plug-in name as well as version.

```
External("JAVB-Command", "SMTP-LongVersion")
```



---

### ***MAIL-Activate***

This function is used to activate your license key you receive when you receive when you purchase MondoMail.

```
External("JAVB-Command", "MAIL-Activate" & "I" & [Activation Key])
```

This call will return a text string that gives you info. Either the plug-in was activated, or there was some sort of error.

---

### ***MAIL-ShortVersion***

This function is used to get a numeric value of the plug-in version.

```
External("JAVB-Command", "MAIL-ShortVersion")
```

---

### ***MAIL-LongVersion***

Using this function, you can retrieve a string that contains the plug-in name as well as version.

```
External("JAVB-Command", "MAIL-LongVersion")
```

---

---

## *Chapter 3: SMTP Functions*

---

The SMTP functions in MondoMail allow you to send email from within a FileMaker database.

---

### ***SMTP-NewMessage***

This function is what you would use to start building a new message.

```
External("JAVB-Command", "SMTP-NewMessage" & "!" & [SMTP Server])
```

The SMTP Server can be the IP address or host name of your mail server. This function is called before any other functions when starting a new email message.

---

### ***SMTP-SendMessage***

Once you have passed all parameters to FileMaker containing your info, you can use this function to send the message.

```
External("JAVB-Command", "SMTP-SendMessage" & "!" & [Timeout In Seconds])
```

---

When sending a message, it spawns an independent thread for that message. The nice thing about having it's own thread is that you can actually send multiple message at once.

The timeout parameter is really just a timeout telling the system how long to wait for the thread. If the timeout time passes, the message will typically be delivered anyway. Because of this, you could set the timeout to zero and let it instantly spawn a thread and return control to FileMaker (even though it's sending the email in the background).

---

### ***SMTP-SetSubject***

You can set the message subject with this command.

```
External("JAVB-Command", "SMTP-SetSubject" & "!" & [Subject Text])
```

---

### ***SMTP-SetFrom***

This is the function used to tell MondoMail who the email is coming from.

```
External("JAVB-Command", "SMTP-SetFrom" & "!" & [Sender's Email  
Address] & "!" & [Sender's Real Name])
```

Sender's real name is an optional parameter.

---

### ***SMTP-SetReplyTo***

This is the function can be used to set the reply-to header of the email.

```
External("JAVB-Command", "SMTP-ReplyTo" & "I" & [Reply-To Email  
Address] & "I" & [Reply-To Real Name])
```

This is an optional function.

---

### ***SMTP-AddToRecipient***

This is the function used to tell MondoMail who the email is going to.

```
External("JAVB-Command", "SMTP-AddToRecipient" & "I" & [Recipient's  
Email Address] & "I" & [Recipient's Real Name])
```

This function can be called multiple times to send the email to multiple recipients. Recipient's real name is optional.

---

### ***SMTP-AddCCRecipient***

This is the function used to tell MondoMail who the email should be carbon copied to (if anyone).

```
External("JAVB-Command", "SMTP-AddCCRecipient" & "I" & [Recipient's  
Email Address] & "I" & [Recipient's Real Name])
```

---

This function can be called multiple times to send the email to multiple recipients and only needs to be called if you are CCing the message to someone.

---

### ***SMTP-AddBCCRecipient***

This is the function used to tell MondoMail who the email should be blind carbon copied to (if anyone).

```
External("JAVB-Command", "SMTP-AddBCCRecipient" & "|" & [Recipient's  
Email Address] & "|" & [Recipient's Real Name])
```

This function can be called multiple times to send the email to multiple recipients and only needs to be called if you are BCCing the message to someone.

---

### ***SMTP-SetContent***

You can set the email body content with this function.

```
External("JAVB-Command", "SMTP-SetContent" & "|" & [Content-Type] &  
"|" & [Charset] & "|" & [Message Body])
```

Content-type and charset are optional. If not specified, they will default to "text/plain" and "us-ascii". If charset is provided, content-type must also be specified or the parameter list will not be properly read by the plug-in.

---

Common content-types for a message body (or message bodypart) include: text/plain, text/html, text/rfc, text/xml, text/tab-separated-values, image/gif, image/jpeg, et al.

Common charsets include us-ascii and iso-8859-1.

---

### ***SMTP-SetURLContent***

This unique function allows you to specify a remote HTTP URL for use in your email message body.

```
External("JAVB-Command", "SMTP-SetURLContent" & "l" & [URL])
```

Currently only HTTP URLs are supported. Images or any imbedded items are not included.

---

### ***SMTP-AddHeader***

The AddHeader command allows you to set the value of any email header.

```
External("JAVB-Command", "SMTP-AddHeader" & "l" & [Header Name] & "l" & [Header Contents])
```

You can use this command to add optional headers such as X-URL, X-Organization, etc. to your email messages.

---

## ***SMTP-RequestReturnReceipt***

This function adds a special header to the email requesting a return receipt.

```
External("JAVB-Command", "SMTP-RequestReturnReceipt" & "I" & [Email  
Address] & "I" & [Real Name] & "I" & [Charset])
```

---

## ***SMTP-BeginMultipart***

If you are sending an email with multiple types of content, you must call this command before adding any body parts to the message, then call EndMultipart when finished adding body parts.

```
External("JAVB-Command", "SMTP-BeginMultipart" & "I" & [Main Content-  
Type])
```

Anytime you send an attachment with an email message, you must use this command.

Common content-type strings for multipart MIME messages include multipart/mixed and multipart/alternative.

---

## ***SMTP-AddBodyPart***

When setting various parts of a multi-part email message, this is the function you would use to do so.

```
External("JAVB-Command", "SMTP-AddBodyPart" & "I" & [Content-Type] &  
"I" & [Charset] & "I" & [Message Body])
```



---

### ***SMTP-AddURLBodyPart***

This function is similar to the AddURLContents function, except that it is for a multi-part email message.

```
External("JAVB-Command", "SMTP-AddURLBodyPart" & "!" & [URL])
```

---

### ***SMTP-AddAttachment***

If you wish to add an attachment to your email, this function will allow you to do just that.

```
External("JAVB-Command", "SMTP-AddAttachment" & "!" & [Full File Path]  
& "!" & [Disposition])
```

The file path must be a complete path specification appropriate to the platform in use. For Windows this could include the drive specifier (e.g., C:\myfile.pdf). For Macintosh the path would be colon-separated and start from the volume containing the file (e.g., Macintosh HD:Desktop Folder:myfile.pdf).

Disposition is an indication to the recipient's email client what the nature of the attachment is. Disposition defaults to "ATTACHMENT", but "INLINE" may also be used also. If you were adding an image file attachment, you might wish to use the INLINE disposition type to suggest that the image be displayed directly in the email message.

---

### ***SMTP-EndMultipart***

This is the command that is called after you set all your parts of your body.

```
External("JAVB-Command", "SMTP-EndMultipart")
```

---

### ***SMTP-SendSimpleEmail***

This function will allow you to send a simple email with a single function call.

```
External("JAVB-Command", "SMTP-SendSimpleEmail" & "I" & [SMTP  
Server] & "I" & [Subject] & "I" & [From] & "I" & [To] & "I" & [CC] & "I" &  
[Message Body])
```

---

## *Chapter 4: POP3/IMAP Functions*

---

The POP3 and IMAP functions in MondoMail allow you to download emails from your mail server directly into your FileMaker database.

---

### ***MAIL-Connect***

This function is used to connect and log into to a POP3 server. Typically it is followed by other MondoMail functions.

```
External("JAVB-Command", "MAIL-Connect" & "!" & [Server Address] & "!"  
& [Username] & "!" & [Password])
```

This function only works for POP3 servers. For connecting to IMAP mail servers, see the URLConnect function.

---

### ***MAIL-URLConnect***

This function is used to connect and log into to a POP3 or IMAP server. Typically it is followed by other MondoMail functions.

---

```
External("JAVB-Command", "MAIL-URLConnect" & "!" & [Mail URL])
```

The Mail URL should be one of:

- `imap://username:password@server[:port]/INBOX`
- `pop3://username:password@server[:port]/INBOX`

---

### ***MAIL-Disconnect***

Once you complete whatever functions you are doing on the POP3 server, you can issue the Disconnect command to disconnect from the server.

```
External("JAVB-Command", "MAIL-Disconnect")
```

If you are connected to a mail server when FileMaker quits, MondoMail will automatically issue this command for you.

---

### ***MAIL-IsConnected***

This function can be called to check if you are connected to a mail server.

```
External("JAVB-Command", "MAIL-IsConnected")
```

The result of this call will return "TRUE" or "FALSE".

---

### ***MAIL-CountMessages***

If you would like to know the number messages on the mail server, you can check with this command.

```
External("JAVB-Command", "MAIL-CountMessages")
```

---

### ***MAIL-GotoMessage***

This function will set the internal pointer to a specific message on the mail server.

```
External("JAVB-Command", "MAIL-GotoMessage" & "I" & [Parameter])
```

The parameter can be; "NEXT", "PREV", "FIRST", "LAST" or a number (message number).

---

### ***MAIL-FetchEnvelopes***

This will pre-fetch the message envelopes. This function is optional and is not required.

```
External("JAVB-Command", "MAIL-FetchEnvelopes")
```

---

### ***MAIL-GetMessageSize***

This function will return the size of the message in bytes.

---

```
External("JAVB-Command", "MAIL-GetMessageSize")
```

---

### ***MAIL-GetRecipients***

You can call this function to get a list of the recipients of the current message.

```
External("JAVB-Command", "MAIL-GetRecipients")
```

If there are multiple recipients, they will be separated by a comma.

---

### ***MAIL-GetMessageUID***

This can be used to grab the unique ID of the current message. This ID will always be the same for the message (even across separate connections to the mail server).

```
External("JAVB-Command", "MAIL-GetMessageUID")
```

This is the unique POP ID, not the Message-ID header.

---

### ***MAIL-GetSubject***

This will return the subject of the current message.

```
External("JAVB-Command", "MAIL-GetSubject")
```

---

### ***MAIL-GetBody***

This will return the body of the current message.

```
External("JAVB-Command", "MAIL-GetBody")
```

---

### ***MAIL-GetHeader***

This function allows you to grab the value of any header in the current message.

```
External("JAVB-Command", "MAIL-GetHeader" & "!" & [Header Name])
```

If you request the header “ALL”, you will get a result that includes all headers.

---

### ***MAIL-Date***

This function allows you to get the date and/or time of the current message.

```
External("JAVB-Command", "MAIL-Date" & "!" & [Parameter])
```

The parameter can be; “RAW”, “DATE” or “TIME”.

---

### ***MAIL-Sender***

You can call this function to get the sender of the current message.

---

```
External("JAVB-Command", "MAIL-GetSender")
```

---

### ***MAIL-GetContentType***

You can grab the content type of the current message with this command.

```
External("JAVB-Command", "MAIL-GetContentType")
```

---

### ***MAIL-MarkMessageDeleted***

This function will allow you to tag the current (or all) message(s) for deletion from the mail server.

```
External("JAVB-Command", "MAIL-MarkMessageDeleted" & "!" & [True/  
False] & "!" & [ALL])
```

The ALL parameter is optional and will apply the command to all messages if used.

---

### ***MAIL-SetMessageFlag***

You can set the message flag on an IMAP server by using this function.

```
External("JAVB-Command", "MAIL-SetMessageFlag" & "!" & [Flag Name] &  
"!" & [True/False])
```



---

You can set any of the following flags: “ANSWERED”, “DELETED”, “DRAFT”, “FLAGGED”, “RECENT”, “SEEN”.

---

### ***MAIL-GetMessageFlags***

You can read the message flags from an IMAP server by using this function.

```
External("JAVB-Command", "MAIL-GetMessageFlags" & "I" & [Delimiter])
```

The delimiter defaults to a carriage return if nothing is specified.

---

### ***MAIL-CountAttachments***

This function will return the number of attachments that the current message has (as an integer).

```
External("JAVB-Command", "MAIL-CountAttachments")
```

---

### ***MAIL-SaveAttachment***

If you would like to save the attachment(s) that within the current message, you can call this function to do so.

```
External("JAVB-Command", "MAIL-SaveAttachment" & "I" & [Local Path])
```

The local path is the file path to the location you would like to save the attachments to.

---

## ***MAIL-SaveEmailMessage***

This command will save the email message to your local disk.

```
External("JAVB-Command", "MAIL-SaveEmailMessage" & "|" & [Local Path  
+ Filename])
```

The local path is the file path to the location you would like to save the attachments to. Don't forget to include the filename you want to save the message as.

---

## ***MAIL-DumpMessageStructure***

This function will return the MIME body part heirarchy.

```
External("JAVB-Command", "MAIL-DumpMessageStructure")
```

---

## ***MAIL-GetRawMessage***

If you would like to get the raw message for the current message, you can use this function.

```
External("JAVB-Command", "MAIL-GetRawMessage")
```

If the message is larger than 64k, only the first 64k will be returned.

---

## *Chapter 5: Other Functions*

---

There are a few miscellaneous functions that MondoMail supports. Those functions are outlined in this chapter.

---

### ***SMTP-SetDelimiter***

This function changes the parameter delimiter from “|” to any other character for the remainder of the FileMaker session.

```
External("JAVB-Command", "SMTP-SetDelimiter" & "|" & [New Delimiter  
Character])
```

---

### ***SMTP-DetachLogFile***

This function will detach the SMTP Mail Log file.

```
External("JAVB-Command", "SMTP-DetachLogFile")
```

The SMTP Log file(s) are located in the FileMaker Java Extensions folder. It's a good idea to detach the log before attempting to import it

---

or make changes to it, particularly under Windows where the file is locked while in use.

---

### ***JAVB-ChooseFile***

This function will prompt the user to select a file from their local system.

```
External("JAVB-Command", "JAVB-ChooseFile")
```

Note: This command uses a different prefix from the other email-related commands.

---

## **A**

Activate 6, 7  
Activation Key 3  
AddAttachment 15  
AddBCCRecipient 12  
AddBodyPart 14  
AddCCRecipient 11  
AddHeader 13  
AddToRecipient 11  
AddURLBodyPart 15  
Attachments 15, 23

## **B**

BCC 12  
BeginMultipart 14  
Body 12, 13, 15, 21  
BodyPart 14, 15

## **C**

CC 11  
ChooseFile 26  
Connect 17  
Content 12, 13  
ContentType 22  
CountAttachments 23  
CountMessages 19

## **D**

Date 21  
Delete Messages 22  
Delimiter 25  
Disconnect 18  
Discussion List X  
DumpMessageStructure 24

## **E**

Email Discussion List X  
EndMultipart 16  
Entering Activation Key 3  
Envelopes 19  
ERR 6  
Examples 5

## **F**

FetchEnvelopes 19  
From 10  
Functions 5, 9, 25

## **G**

General Functions 5  
GetBody 21  
GetContentType 22  
GetDate 21  
GetHeader 21  
GetMessageFlags 23  
GetMessageSize 19  
GetMessageUID 20  
GetRawMessage 24  
GetRecipients 20  
GetSender 21  
GetSubject 20  
GotoMessage 19

## **H**

Header 13, 21  
How Does It Work? 5

## **I**

IMAP Functions 17  
IsConnected 18

## **K**

Key 3

## **L**

LongVersion 6, 7

## **M**

MarkMessageDeleted 22  
MessageDeleted 22  
MondoMail Software License 1  
Multipart 14, 16

## **N**

Net Tools Discussion List X

---

NetTools Documentation X  
NewMessage 9

## **O**

Other Functions 25

## **P**

Plug-In Results 6  
POP3 Functions 17  
Preface IX

## **R**

Receipt 14  
Recipient 11, 12  
ReplyTo 11  
RequestReturnReceipt 14  
Results 6  
Return Receipt 14

## **S**

SaveAttachment 23  
SaveEmailMessage 24  
Send Email 16  
SendMessage 9  
SendSimpleEmail 16  
SetContent 12  
SetDelimiter 25  
SetFrom 10  
SetMessageFlag 22  
SetReplyTo 11  
SetSubject 10  
SetURLContent 13  
ShortVersion 6, 7  
Simple Email 16  
SMTP Functions 9  
Software License 1, 2  
    Agreement 4  
Subject 10, 20

## **T**

Time 21  
To 11

## **U**

URL 15  
URL Content 13  
URLConnect 17

## **V**

Version 6, 7

## **Y**

Your Software License 2