

# Color World Map Generator 2.0<sup>US/UK</sup>

Copyright © 2007-2010, stallwanger it.dev | process and controlling

All rights reserved.

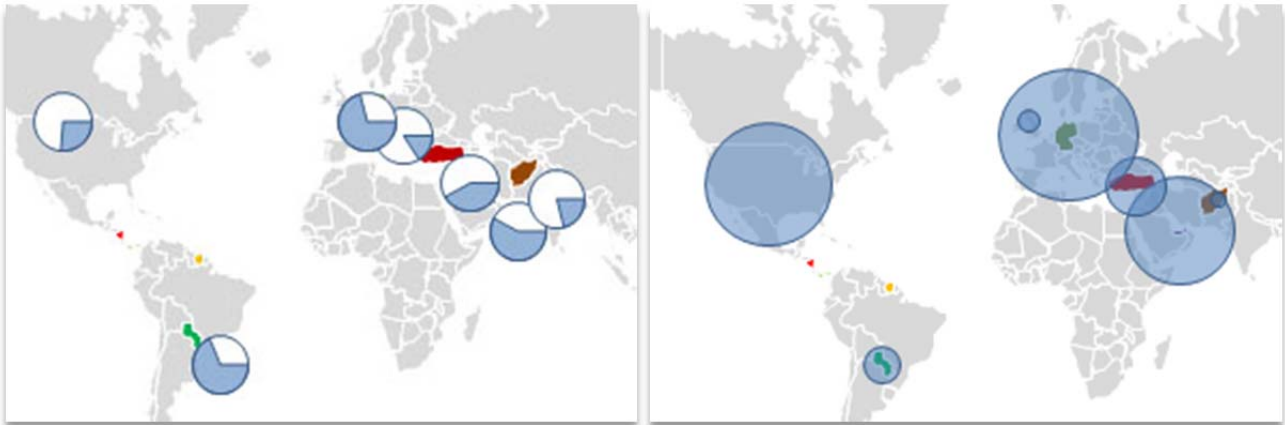


## Introduction

The portrayal of key performance indicators linked to the location of international companies is usually very time and cost-intensive.

For important Management decisions a world map is required for the comparison of the individual locations which must be newly converted for each individual presentation.

The World Color Map Generator is an efficient tool which allows you to edit and manage your data in an excel spreadsheet to be easily adapted in a visualized Microsoft PowerPoint Presentation.



Example Maps: Harveyball, Capacity

The Color-World Map Generator is a helpful supportive tool which automates the cumbersome manual insertion of configuration, text elements and animation effects into a PowerPoint Presentation.

At the same time numerous helpful features such as country identification and ISO flags are lodged in sub-directories.

The Flag-Icons included are automatically positioned in the capital cities of the respective country.

The color adaption of the maps is easy to operate and can be individually aligned to your CI specifications.

## System Requirements

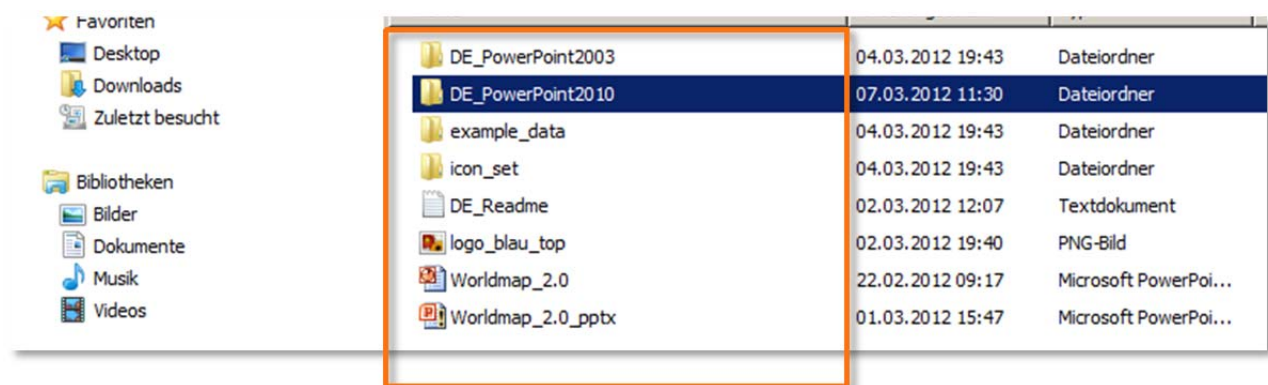
The Color-World Map Generator has been developed using Microsoft Office 2007 (SP2) under Windows XP and tested with Office 2007 and Office 2010.

The minimum requirement: Microsoft Excel 2007 and Microsoft PowerPoint 2007 or higher. Our recommendation is to work with Microsoft Office 2010 with the current Service-Packs.

## Software Installation

Save the Zip package in a local directory on your computer and unzip the respective files with a simple double-click. You should then see the following folder structure.

### Zip-File Structure



## Subdirectories:

### Subdirectory example\_data:

In this subdirectory example\_data you will find sample files for Excel 2003-2007.

- World Map Nato – Distribution of the military alliances of 28 States.
- S&P Country\_Rating – Rating agency according to S&P distribution of countries.
- WTO – Distribution of the World Trade Organization.

### Subdirectory icon\_set:

All of the ISO-Flags have been lodged in PNG format in the subdirectory icon\_set, should you wish to portray flags on your World Map.

In the subdirectories 16, 24, 32, 48 flags in varying sizes (specified in pixels) have been lodged. (See the following page)



## Activating Macros

In order to enable all functions of the World Map you must activate the macro functions of Microsoft PowerPoint.

A short tutorial “Activating Macros under Office 2007” is available under [http://www.stallwanger.net/makro\\_de.php](http://www.stallwanger.net/makro_de.php).

## Settings using Office 2010:

Open any PowerPoint Presentation for 2010. ① Select the command **File** and ② click the item **Options** on the toolbar.

A separate window appears **PowerPoint Options**.

## Enabling Macro:

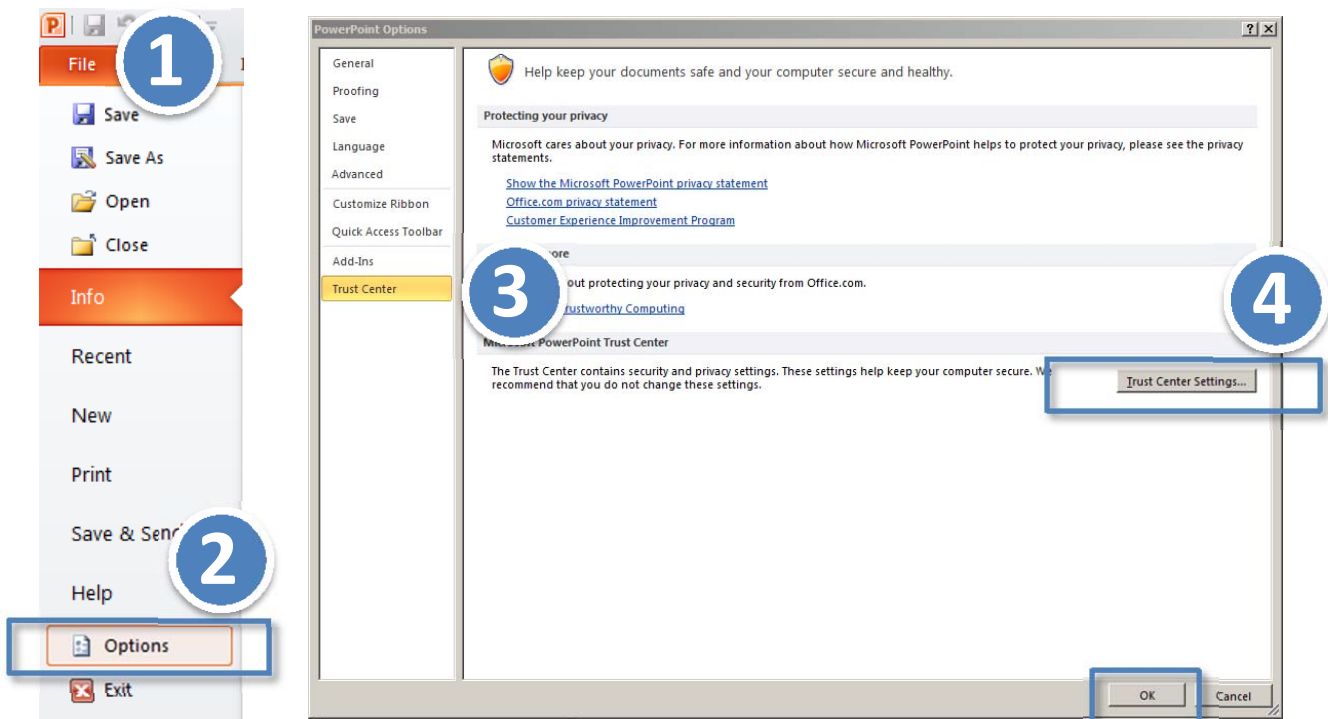
A short tutorial “Enabling Macros under Office 2007” (XP - 2002, Office 2007)

A current online version is available under: [http://www.stallwanger.net/makro\\_de.php](http://www.stallwanger.net/makro_de.php)

## Settings using Office 2010:

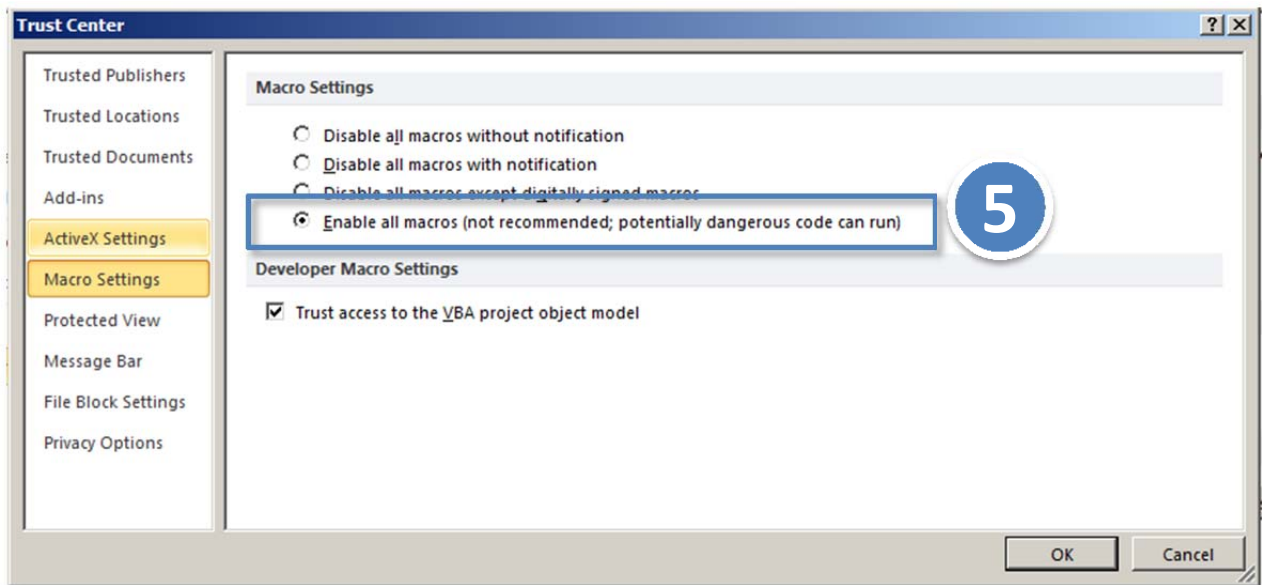
Open any PowerPoint Presentation for 2010. ① Select the command File and ② click the item Options on the toolbar.

A separate window appears PowerPoint Options.



- ③ A further dialog box appears with the name **Security Center** and select the **Trust Center** .
- ④ Press the button **Trust Center Settings...** .

5 Select **Enable all macros** – only for stallwanger IT.dev macros. For other macros and scripts please contact your administrator

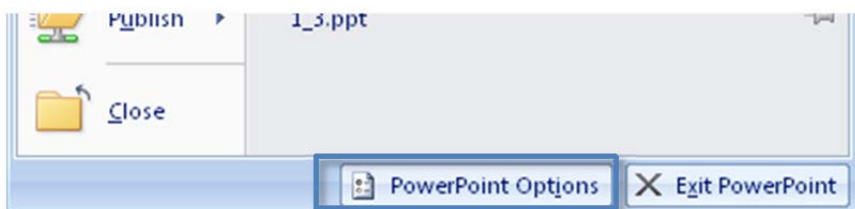


It may be necessary to close PowerPoint completely and open it again so that all the changes are adopted.

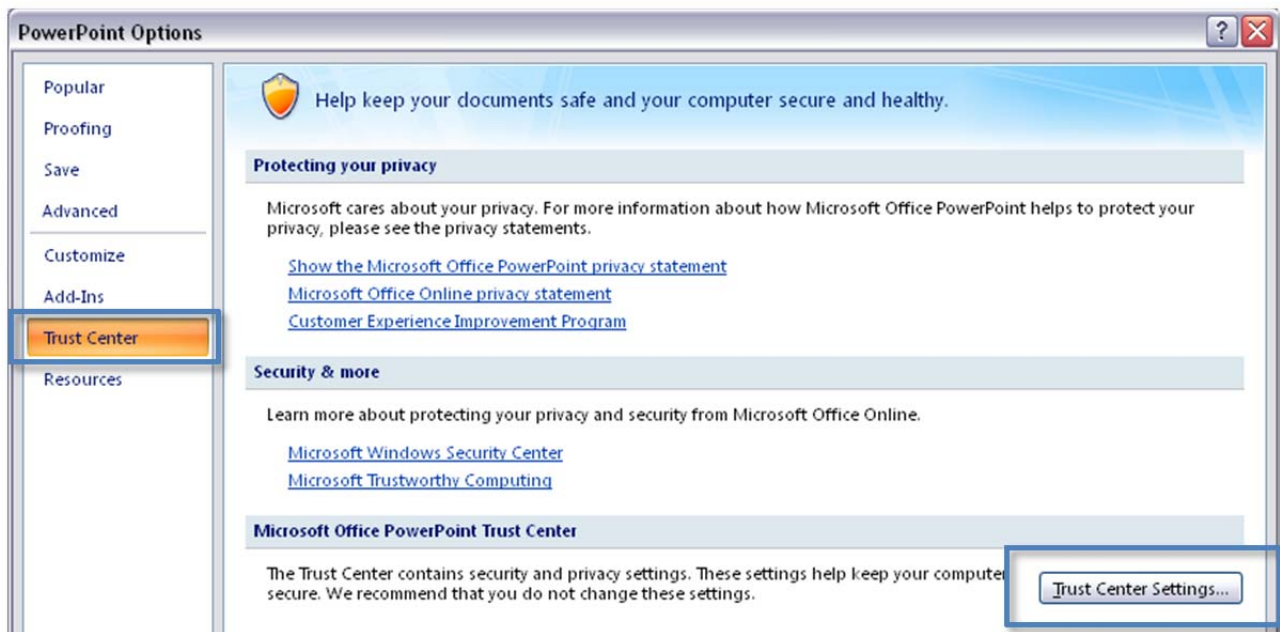
### Settings for the Office 2007 Products:

Launch the Office 2007 application of your choice.

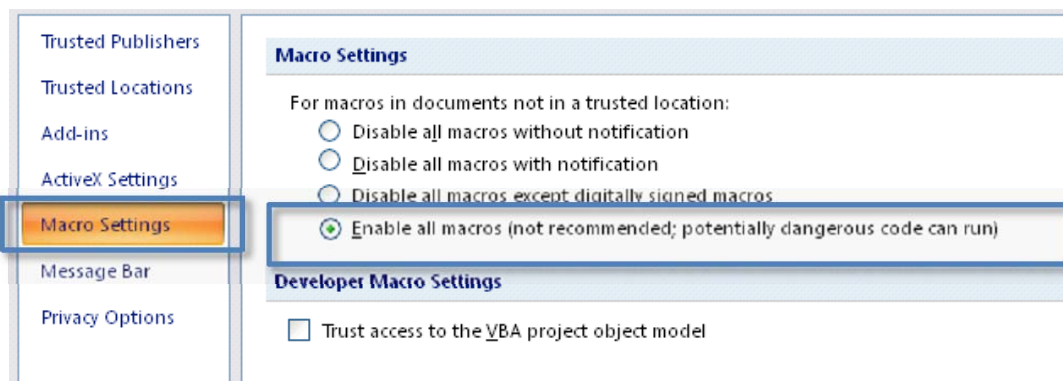
Before you open the file click the Start button in the program window on the top left and select the button **Options** for **PowerPoint**, **Excel** or **Access**.



In the dialog box of the Office Application Options which now appears select the button **Settings for the Trust Center** under the menu item **Trust Center**.



In the subsequent dialog window under the menu item **Settings for Macros** select the option **Activate all macros** (This applies only to **stallwanger.net** macros. For other Software companies please enquire separately. If you are unsure contact your IT consultant or administrator).



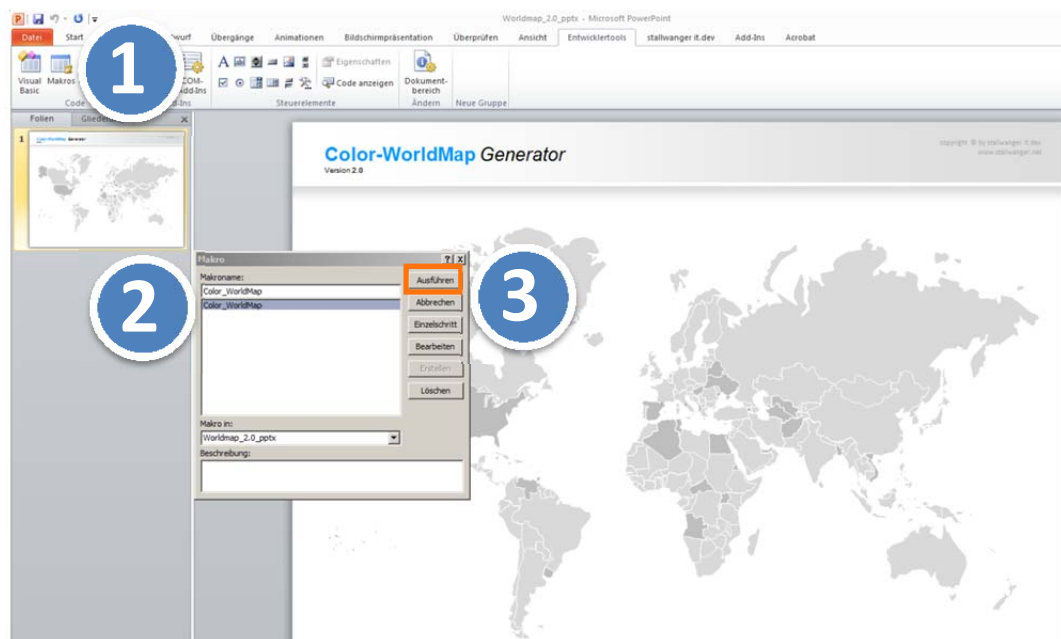
Finally confirm your selection by pressing **OK** twice.  
Now you will be able to open the file **ganttt.ppt** and run the macro **Color\_WorldMap**.

Using the key combination **ALT + F8** you can also open the macro window.

## Quick Start:

Open the PowerPoint file **Worldmap\_2.0\_pptx** (for PowerPoint 2007, 2010).

- ① Start the Macro Color\_Worldmap.
- ② Select one of the Excel file examples under the directory example\_data.
- ③ Press the execute button.





## Settings and Options:

Window overview for the Setting options



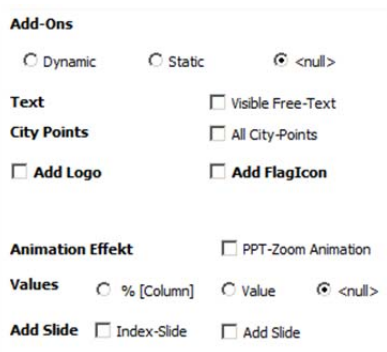
- ④ You can select the source file for the Excel file you created.

It makes no difference whether you use the format **.xls** (Excel 2003) or **.xlsx** (Excel 2007 or Excel 2010).

### Warning




Make sure that the data structure corresponds to requirements and samples and Example Files.

### Add-Ons:



Add-ons are additional functions, which affect the display of the PowerPoint Presentation but have no affect on the underlying Excel files.

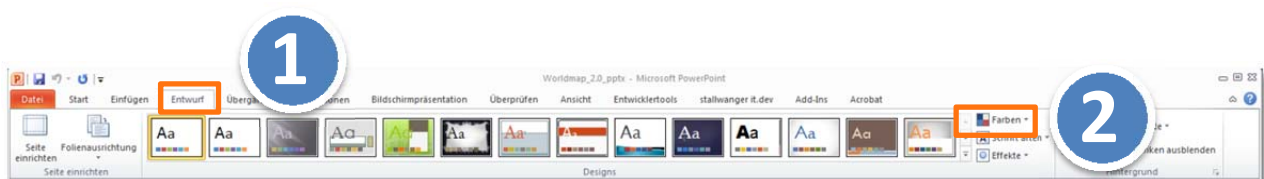
The following table explains the difference between the terms **Dynamic**, **Static** and **(empty = null)**

Settings	Caption	Preview
<null>	No additional features will be generated. Standard setting.	
<dynamic>	The circles are visualized according to the values in the columns, the larger the values, the larger the radius of the circle. The center of the circle is allocated within the country's territory, so called Shape.	
<static>	The circles are displayed as „Harvey Balls“. The radius of the circle remains the same.	

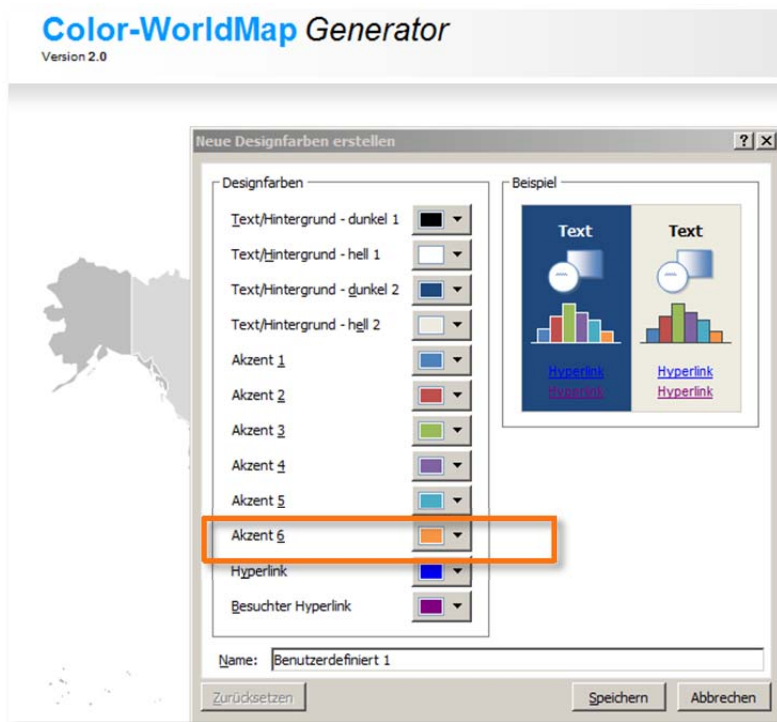
When **Dynamic** and **Static** are selected, circles will be generated. The color of your choice can be selected using the palette.

The preset standard color is the PowerPoint color **Accent1**.

## Selecting the Colors



## Choosing a new design color:



### Visible Free-Text:

By activating this option (check the box) you are able to add your own text. The positioning is next to the Country\_Shape-Object. Usually it is shifted around  $\frac{2}{3}$  vertically and horizontally, so as to ensure that the object itself is still recognizable.

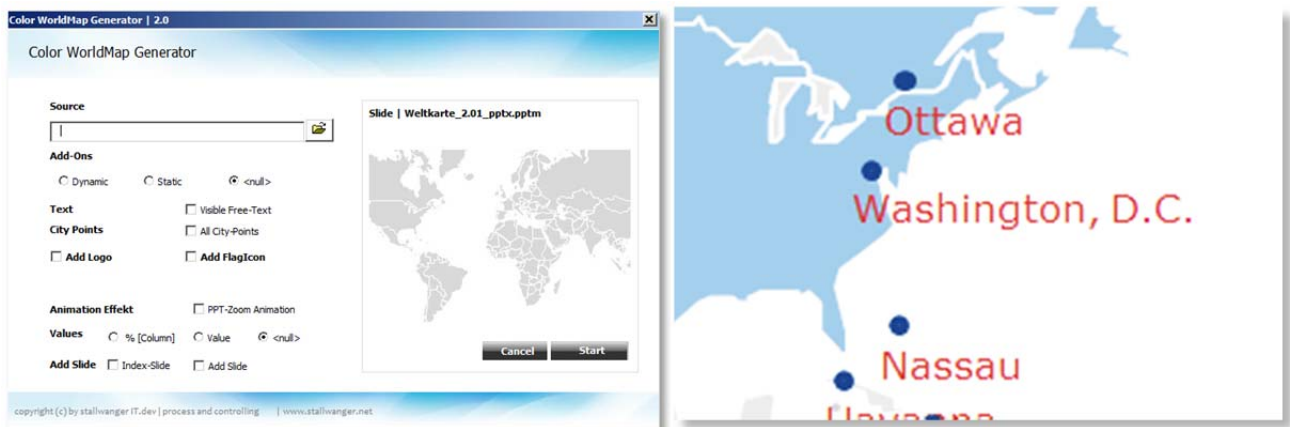
example align text:



This is the column D in the attached Excel sample file.

### City Points:

By activating this option (check the box) **All City Points** all the capitals cities in the PowerPoint file will be transferred (points and text).



The color of the text can be changed at any time using the classic PowerPoint function **New design** color (see page 9) according to your CI specifications. The present standard color is **Accent2**.

### Add Logo:

With **Add Logo** you can easily insert your company logo in the PowerPoint presentation.

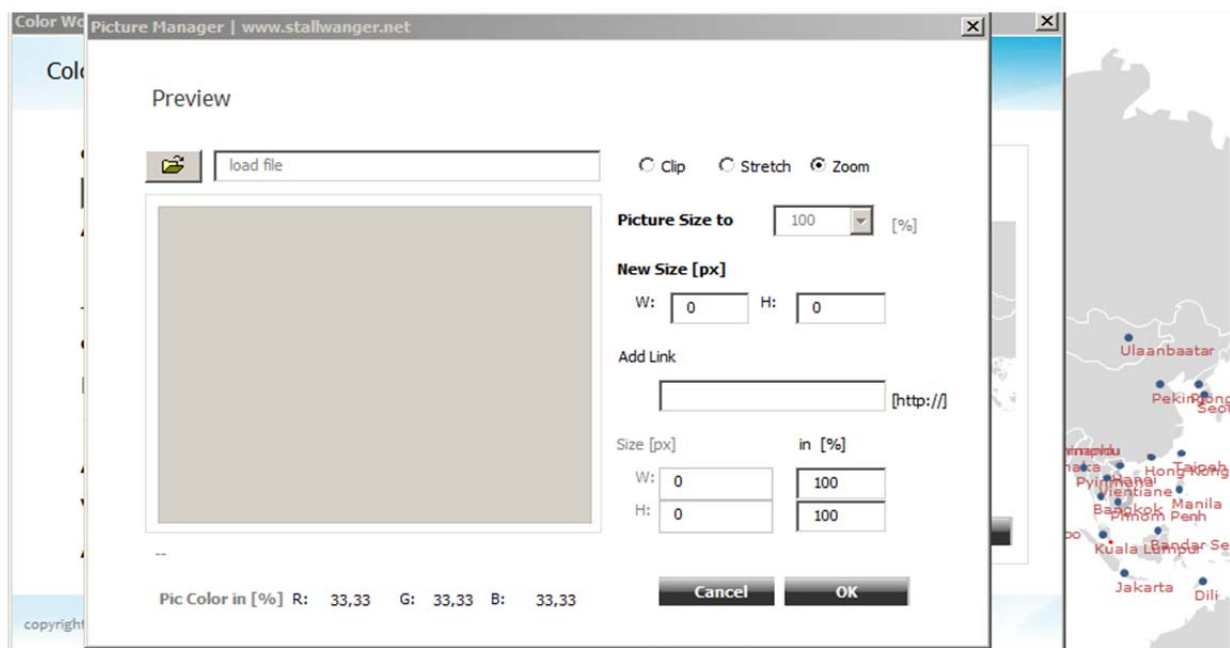


By ticking the box and activating **Add Logo** a small picture will appear and a directory path shown. The following image formats are supported: \*.png, \*.jpg, \*.tiff, \*.gif



By clicking on the picture or with a double click on the directory path the **Picture Manager** can be opened and select a Logo of your choice.

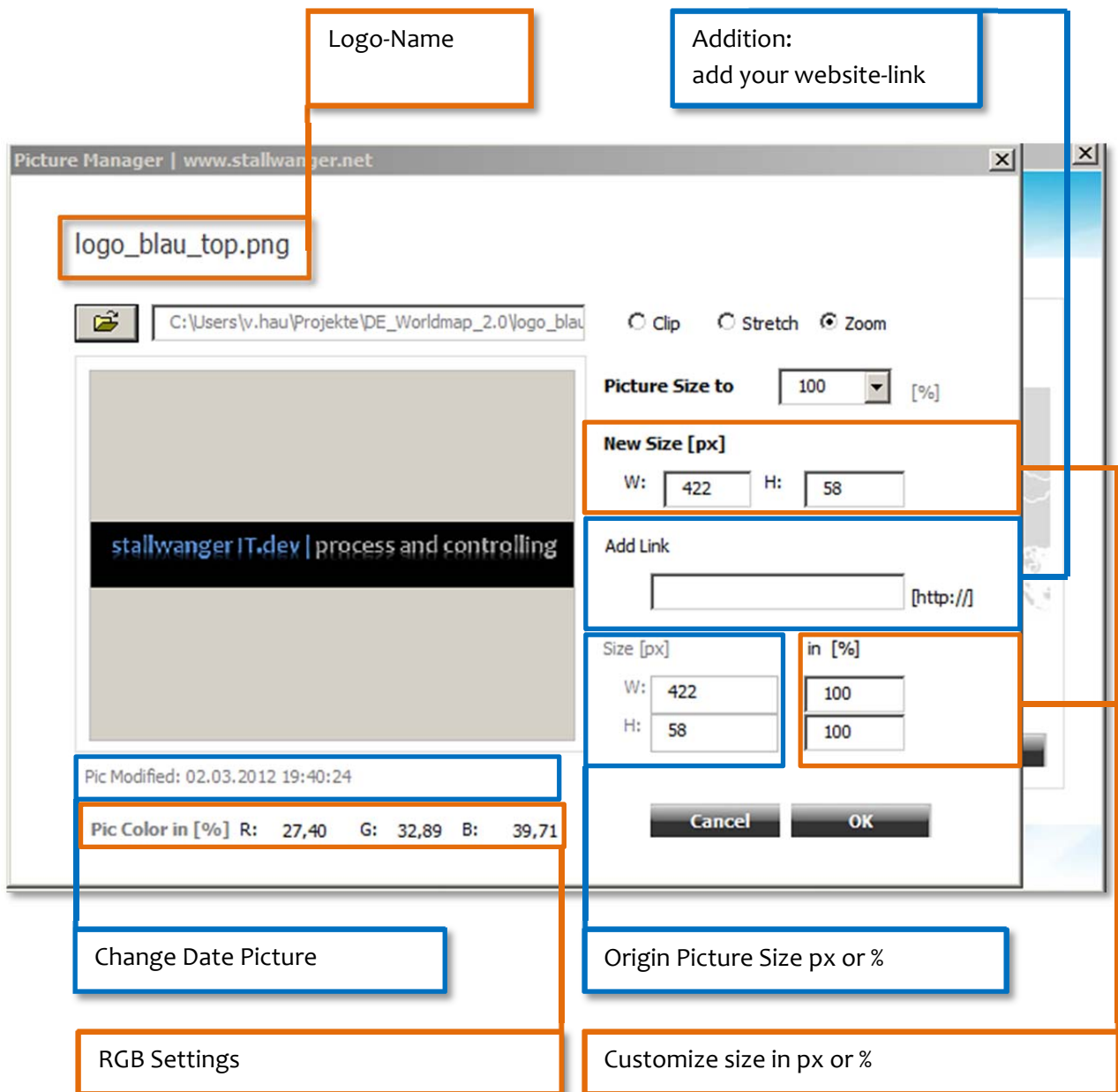
### Picture Manager:



### Warning:

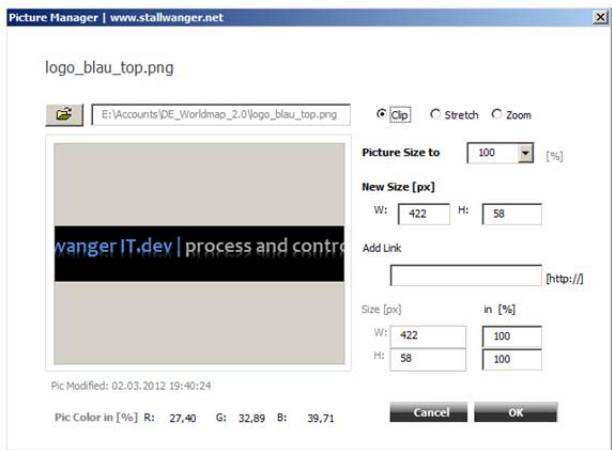
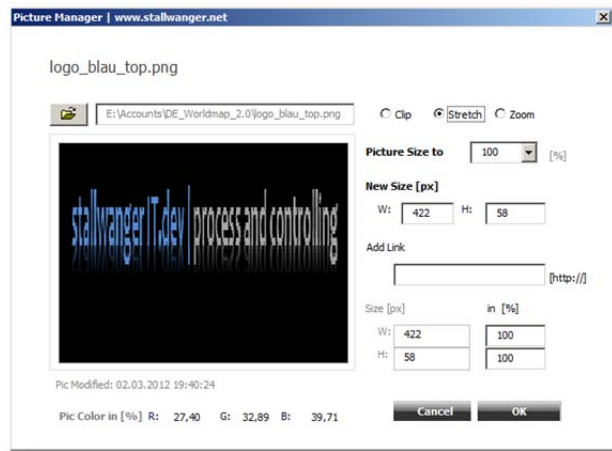
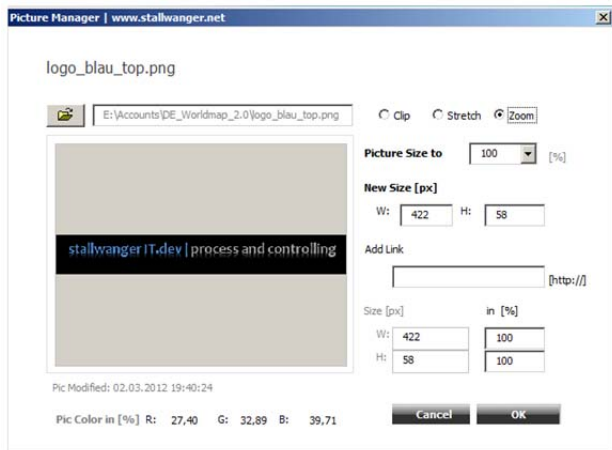
The Picture Manager cannot show some image formats in the preview mode, it is, however, still possible that your PowerPoint versions supports them.

## Overview of functions of the Picture Manager:

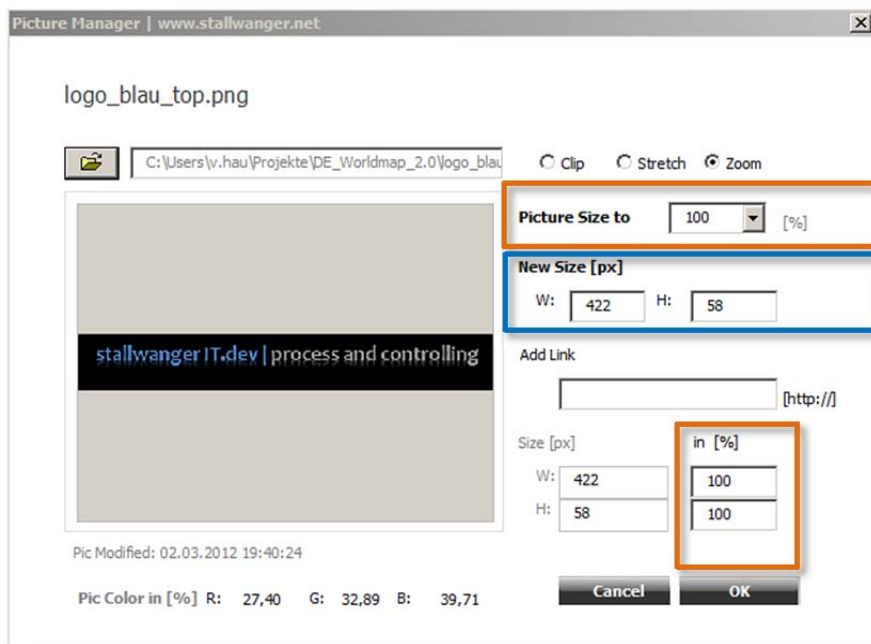


## Preview Settings:

The option Clip allows the display of the image in the original size, using **Stretch** on the respective area and with **Zoom** the image can be adapted. The preview image can be altered by changing between, **Clip**, **Stretch**, **Zoom** without changing the original image.

Settings	Caption	Preview - Example
Clip	Original	
Stretch	Automatic edit in the <b>preview window</b> including height and width.	
Zoom	Automatic scaling	

## Picture Size to:



New Setting-Values < 100 the picture will be reduce.  
Values bigger then > 100 the picture will be grow.

The Picture size can be changed by selecting the box **Picture Size to** and setting the **percentage proportion** resulting in a new calculation of Pixel and proportionate height and width.

## Add Link:

The Add Link setting allows for a Web link to be inserted in the image.

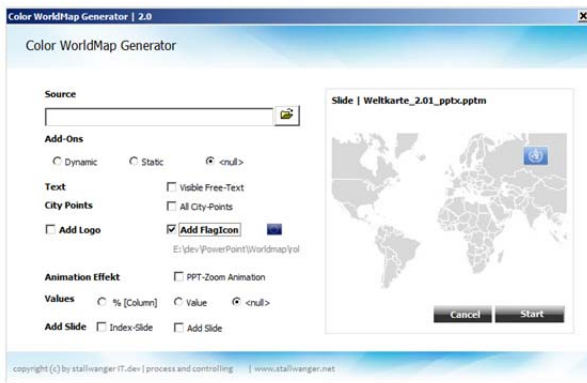


If you click on the image during the presentation, the internet browser opens and the saved web address can be displayed.

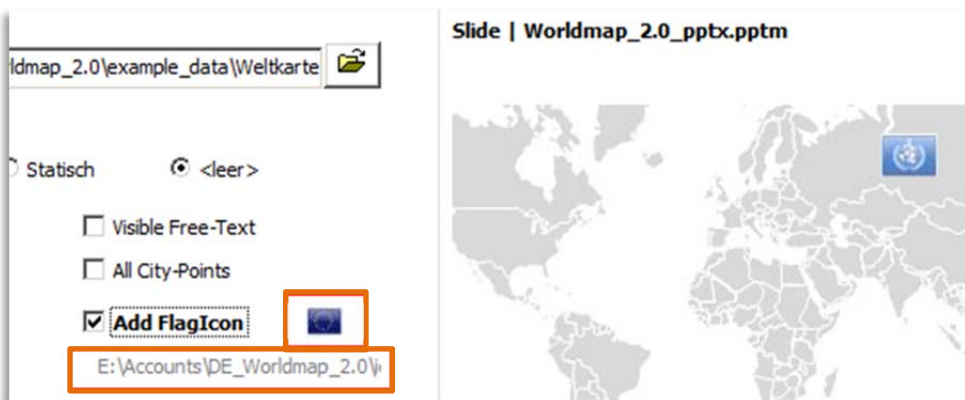
## Add Flag Icon

You can add flag symbols of your choice by ticking and activating **Add FlagIcon**.





Click on the flag to select the path.



Select the main path **flags.iso** in the dialog window and the subdirectory for the size, for example 16, and then click on the respective Flag File.



By selecting „Open“ you can see that the path has been set.

Only Flag symbols for which a value has been entered in the excel table (column Value) will be transferred to the PowerPoint slide

ISO-SHORT	ISO-NAME_US	Value
NIC	NICARAGUA	
HTI	HAITI	
ECU	ECUADOR	10
GUF	FRENCH GUIANA	
CHL	CHILE	3
FLK	FALKLAND ISLANDS	
GTM	GUATEMALA	11
HND	HONDURAS	9
CRI	COSTA RICA	11
PAN	PANAMA	16
DOM	DOMINICAN REPUBLIC	8
COL	COLOMBIA	14
PER	PERU	14
URY	URUGUAY	11

The orientation and the automatic positioning of the flag symbols will occur in accordance with the capital cities of the respective countries.



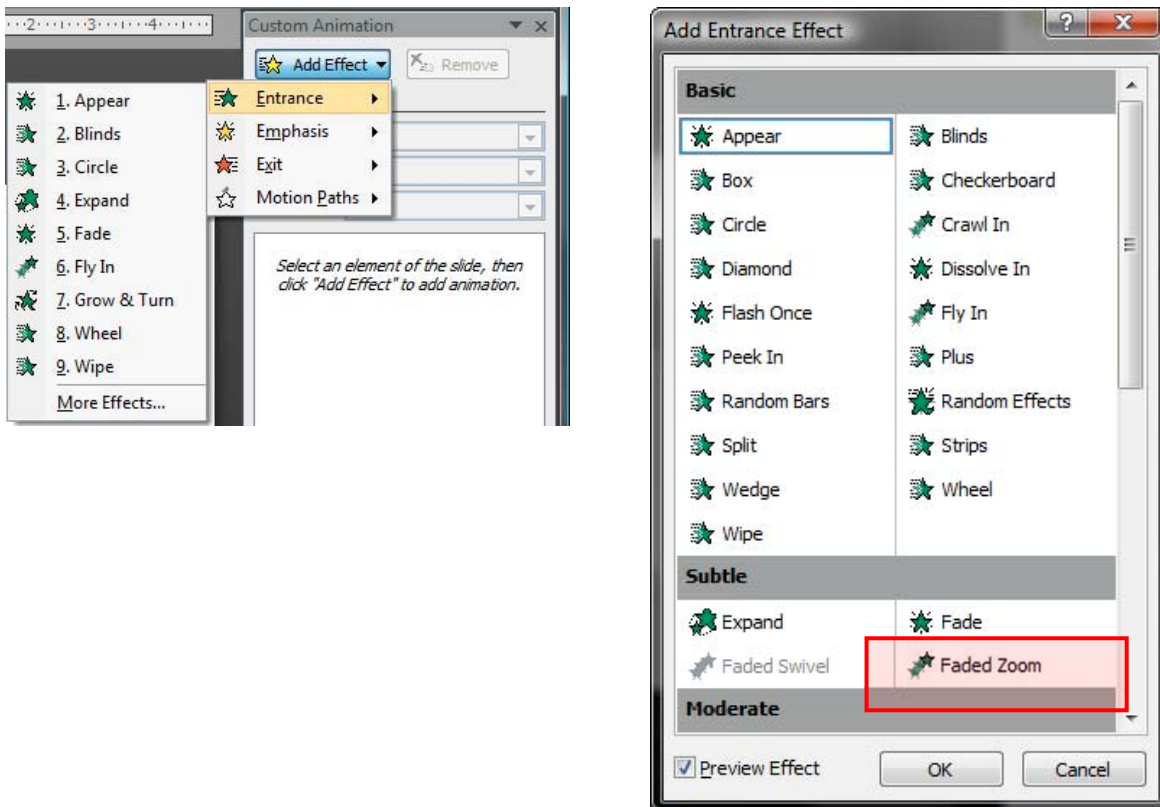
### Add Animation-Effect:

If you want to emphasize or animate certain countries in the on-screen presentation mode tick the box here.

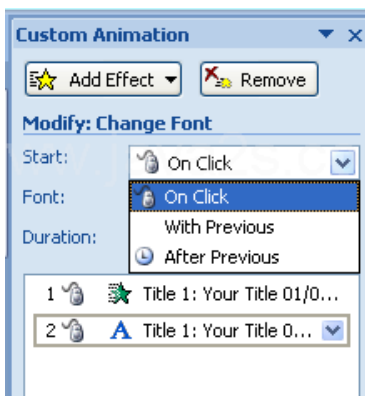
Only those countries where a value has been entered in the excel table (Column C) will be furnished with animation effects.



We have chosen the **Incoming effect – Zoom** in the effect filter.



The effect can be activated with a click during the presentation.



These functions can be individually adapted with the classic PowerPoint functions as necessary and required.

## Values:

Using Values you can display the original values and percentages.  
Column C is used to identify the percentage values for all the data rows.

Only sums or percentage values will be calculated where values are available. Arithmetic mean averages or statistical values are not used.

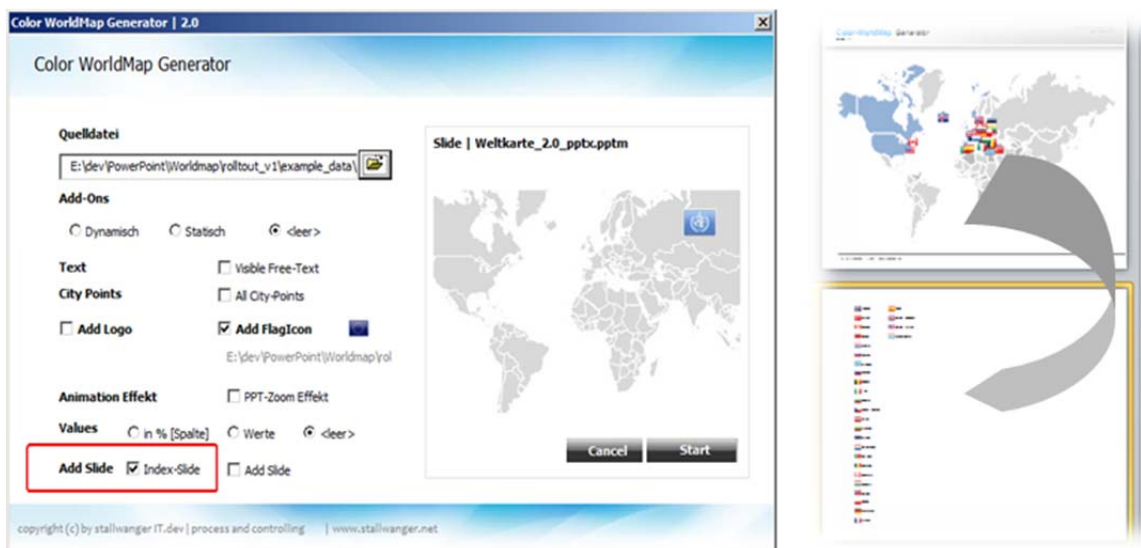
If you do not want to publish percentage figures or values , use the field “null”.

The figures will placed at the end in combination with Add Text, as shown in the following example.

**Office Paraguay 60,61%**

## Add Slide:

A new PowerPoint slide will be created by activating “Index Slide”.



Only countries where values (empty) have been inserted in the excel table (Column C) will be listed.

As an option you can also click on the flag symbol (**Add Flag Icon**), to display the flag symbols on the PowerPoint slide.



The text and the value will be transferred from the excel document and displayed in graphic form on the PowerPoint slide.



### Reset all:

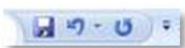
Using the **Preview** view you can see the preset options in advance. No data or values will be calculated.



Should you not be satisfied with the settings, you can reset the macros with the classic PowerPoint function (undo button) or with the key combination **STRG+Z**.

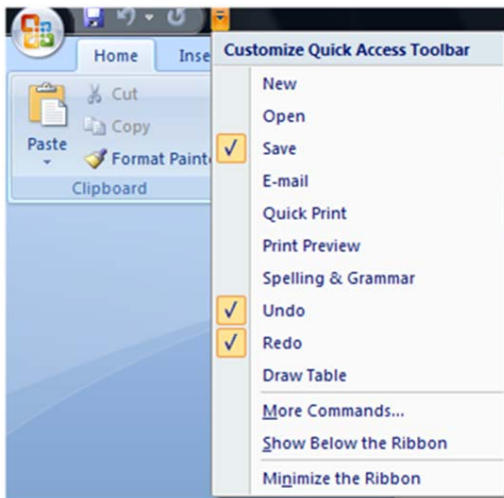
The number of „back“ steps possible can differ according to the office configuration.

Therefore we would recommend that you check the display of the map directly after opening the macros and if necessary reset using the “undo” button or **STRG+Z**.



### Hint:

Setting the undo function for quick access (Office 2007 and Office 2010):



### Save and Save As :

Once you have employed your GanttChart Generator and you wish to save your settings for later analysis and updates (Slide 1) do the following:

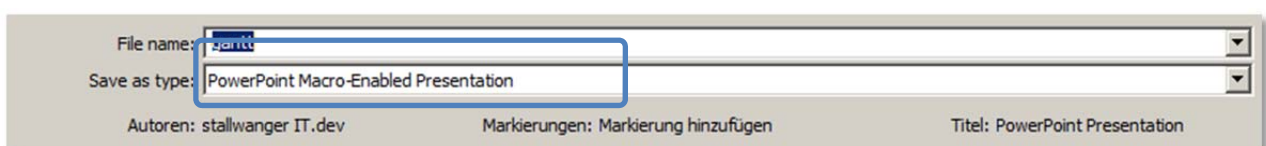
#### For PowerPoint 2003

Save and Save as... and allocate your individual file name

#### For PowerPoint 2007, 2010

Save and Save as...

And select the file: PowerPoint Macros-Enabled Presentation.



Otherwise the macro will be deleted from the PowerPoint Presentation.



## Excel File:

### Structure of the Excel Sheet

	A	B	C	D	E
1	ISO-SHORT	ISO-NAME_US	WERT	Free/Add Text	
2	AFG	AFGHANISTAN	40	Not Activ	
3	ALB	ALBANIA			
4	DZA	ALGERIA			
5	AGO	ANGOLA			
6	ARG	ARGENTINA			
7	ARM	ARMENIA			
8	AUS	AUSTRALIA	50	Transaction Property	
9	AUT	AUSTRIA			
10	AZE	AZERBAIJAN			
11	BGD	BANGLADESH			
12	BLR	BELARUS			
13	BEL	BELGIUM			

### Connection between Excel and PowerPoint files:

In order to enable the communication between Excel and PowerPoint we would recommend that you keep to the following structure in the excel file:

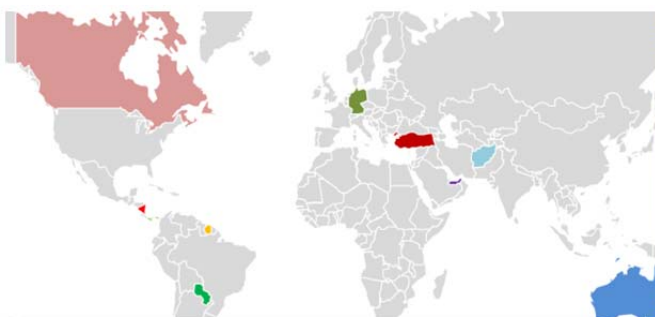
Name	Column	Caption
ISO-SHORT	A	International ISO Alpha 3 decoding table for the respective countries. <b>Please do not alter the names.</b>
ISO-NAME_US	B	ISO Country definition.
WERT	C	Value in figures.
Free/Add Text	D	Additional text.

The field ISO name US contains the Standard US names in the respective ISO Alpha 3 Code. You can change the name at any time (for example to the German name).

If you want to color the background colors of the countries, please change the background colors in the excel sheet (Column ISO-NAME-US). The RGB-values will be transferred.



## PowerPoint



## Excel-File

ISO-SHORT	ISO-NAME_US	WERT	Free/Add Text
1	AFGHANISTAN	40	Not Activ
2	AUS	50	Transaction Property
25	CAN	60	Eventmanagement
53	DEU	600	Backoffice DE
109	PRY	100	Office Paraguay
137	TUR	80	Preview Markt
141	ARE	300	Representative Gov.
142	GBR	60	Office UK
143	USA	50	Office US
153	UNITED STATES		

If no background color is chosen, the original country color will remain.

## Formatting

For the text display (Add Text: Visible Free Text) you can format the text elements directly in the Excel file (for example the text attributes font, size, color and style) which will be published later analog in the PowerPoint file.

ISO-SHORT	ISO-NAME_US	WERT	Free/Add Text
AFG	AFGHANISTAN	40	Not Activ
AUS	AUSTRALIA	50	Τρανσαχτιον Προ.
CAN	CANADA	60	Eventmanagment
DEU	GERMANY	600	Backoffice DE
PRY	PARAGUAY	100	Office Paraguay
TUR	TURKEY	80	Preview Markt
ARE	UNITED ARAB EMIRATES	300	REPRESENTATIVE GOV.
GBR	UNITED KINGDOM	60	Office UK
USA	UNITED STATES	50	Office US



**Deinstallation:**

In order to deinstall the World-Map Generator, simply close all PowerPoint Presentations of Color World-Map Generator and the open Excel files, which you have been using.

Select the file DE\_WorldMAP\_xxx (.xxx = version number) and delete the file.

If you work in a group directory or a shared network, make sure that you have the authority to delete this directory. Your IT consultant or administrator can provide you with details of the relevant authorizations for group directories and shared networks.

**Impressum and Copyright ©****Copyright © 2007-2012****stallwanger it.dev | process and controlling****All rights reserved.****stallwanger IT | process and controlling**

Heilmannstraße 7

DE - München

www.stallwanger.net