

# Installing Driver under Windows ME/9x

(The device name shown in the installation should be WinFast TV 2000. And the steps below are under Windows XP.)

## Installing the First Driver

### Step 1:

Turn on your PC and start up your Windows.

### Step 2:

Shortly after entering the Windows, you will see the **Found New Hardware Wizard** dialog box as shown in the first figure to the right. Tick the option for **'Install from a list or specific location'**. Then click **Next**.

### Step 3:

The wizard will next prompt you to choose your search and installation options as shown in the second figure to the right. Tick **'Include this location in the search'** then give the location: **E:\WinFast TV\DRV** (assuming E is your CD-ROM drive location), or browse for it. And then click **Next**.

### Step 4:

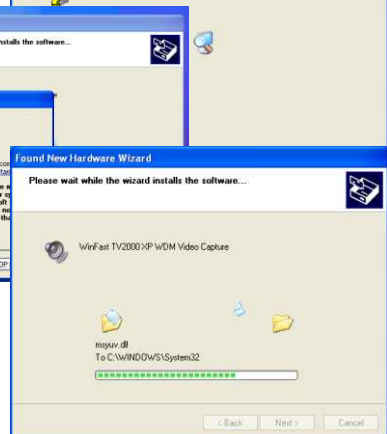
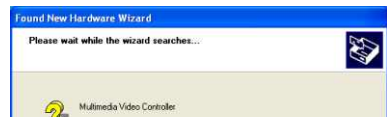
The wizard will then start searching for the driver at the given location.

### Step 5:

A warning message about compatibility appears. Click **Continue Anyway**.

### Step 6:

The windows will then start installing the first driver (WinFast TV 2000 WDM Video Capture). A dialog box with a progress bar appears.



### Step 7:

When the installation of the first driver of WinFast TV 2000 is completed. A dialog box appears as shown in the figure to the right. Click **Finish**.



## Installing the Second Driver

### Step 8:

After finishing installing the first driver, the **Found New Hardware Wizard** dialog box restarts. Tick the option for **'Install from a list or specific location'**. Then click **Next**.



### Step 9:

Like the first time, the wizard prompts you to choose your search and installation options. Tick **'Include this location in the search'** then give the location: **E:\WinFast TV\DRV** (assuming E is your CD-ROM drive location), or browse for it. And then click **Next**.



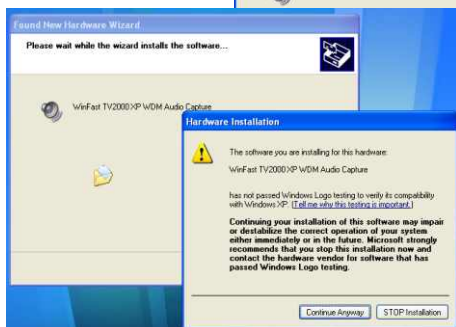
### Step 10:

The wizard will then start searching for the driver at the given location.



### Step 11:

A warning message about compatibility appears. Click **Continue Anyway**.



### Step 12:

The windows will then start installing the second driver (WinFast TV 2000 WDM Audio Capture). A dialog box with a progress bar will then appears. When the installation is done. The wizard will display a dialog box to tell you so. Click **Finish**.

## Installing the Third Driver

### Step 13:

Again, the **Found New Hardware Wizard** dialog box restarts. Tick the option for '**Install from a list or specific location**'. Then click **Next**.

### Step 14:

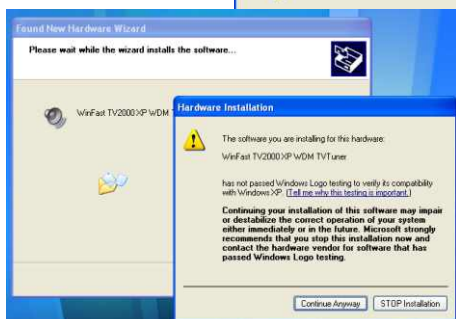
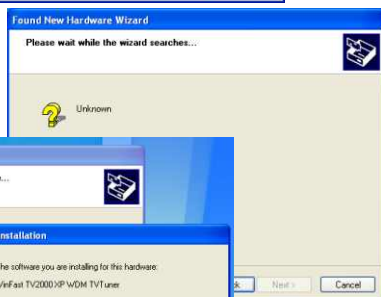
Like the last time, the wizard prompts you to choose your search and installation options. Tick '**Include this location in the search**' then give the location: **E:\WinFast TV\DRV** (assuming E is your CD-ROM drive location), or browse for it. And then click **Next**.

### Step 15:

The wizard will then start searching for the driver at the given location.

### Step 16:

A warning message about compatibility appears. Click **Continue Anyway**.



### Step 17:

The windows will then start installing the third driver (WinFast TV 2000 WDM TV Tuner). A dialog box with a progress bar will then appears. When the installation is done. The wizard will display a dialog box to tell you so. Click **Finish**.

## Installing the Fourth Driver

### Step 18:

Again, the **Found New Hardware Wizard** dialog box restarts. Tick the option for '**Install from a list or specific location**'. Then click **Next**.

### Step 19:

Like the last time, the wizard prompts you to choose your search and installation options. Tick '**Include this location in the search**' then give the location: **E:\WinFast TV\DRV** (assuming E is your CD-ROM drive location), or browse for it. And then click **Next**.

### Step 20:

The wizard will then start searching for the driver at the given location. Then a warning message about the compatibility appears. Click **Continue Anyway**.

### Step 21:

The windows will then start installing the fourth driver (WinFast TV 2000 WDM Crossbar). A dialog box with a progress bar appears will then appears. When the installation is done. The wizard will display a dialog box to tell you so. Click **Finish**.

